

OAK PARK SENIOR CENTER PARKING LOT

WD22012
730 E. FULTON STREET
STOCKTON, CA 95204

ABBREVIATIONS

ABBREVIATION	DESCRIPTION
@	AT
AB	AGGREGATE BASE
ABS	ACRYLONITRILE-BUTADIENE-STYRENE
AC	ASPHALT CONCRETE
BO	BLOWOFF
BCC	BACK OF CURB
BOW	BACK OF WALK
CALWATER	CALIFORNIA WATER SERVICE COMPANY
C.G. & SW	CURB, GUTTER, AND SIDEWALK
CB	CATCH BASIN
CL	CENTERLINE
CO	CLEANOUT
DJ	DROP INLET
DIA	DIAMETER
DIP	DUCTILE IRON PIPE
DWG	DRAWING
EBOW	EXISTING BACK OF WALK
EG	EXISTING GROUND ELEVATION
EL	ELEVATION
EP	EDGE OF PAVEMENT, EXISTING PAVEMENT
ESDMH	EXISTING STORM DRAIN MAINTENANCE HOLE
ESMT	EASEMENT
ESSMH	EXISTING SANITARY SEWER MAINTENANCE HOLE
EX	EXISTING
FH	FIRE HYDRANT
FL	FLOWLINE
FOC	FACE OF CURB
FT.	FEET
G	GROUND
GB	GRADE BREAK
HP	HIGH POINT
ID	INSIDE DIAMETER
IN.	INCH
INV	INVERT
LF	LINAL FEET
LH	LAMP HOLE
LP	LOW POINT
LT	LEFT
MAX	MAXIMUM
MH	MAINTENANCE HOLE
MIN	MINIMUM
MUD	MUNICIPAL UTILITIES DEPARTMENT
NAVD	NORTH AMERICAN VERTICAL DATUM
NO.	NUMBER
NRCP	NON-REINFORCED CONCRETE PIPE
NTS	NOT TO SCALE
OD	OUTSIDE DIAMETER
P	PAVEMENT
PG&E	PACIFIC GAS AND ELECTRIC COMPANY
PL	PROPERTY LINE
PP	POWER POLE
PT	POINT
PUE	PUBLIC UTILITY EASEMENT
PVC	POLYVINYL CHLORIDE
R	RADIAL OR RADIUS
RW	RIGHT-OF-WAY
RC	ROLL-CURB
RT	RIGHT
SD	STORM DRAIN
SDMH	STORM DRAIN MAINTENANCE HOLE
SHT	SHEET
SJC	SAN JOAQUIN COUNTY
SPECS	SPECIFICATIONS
SS	SANITARY SEWER
SSCO	SANITARY SEWER CLEANOUT
SDDI	STORM DRAIN DROP INLET
SMMH	SANITARY SEWER MAINTENANCE HOLE
STA	STATION
STD	STANDARD
SW	SIDEWALK
TC	TOP OF CURB
TFMR	TRANSFORMER
TI	TRAFFIC INDEX
TOW	TOP OF WALL
TYP	TYPICAL
U.S.A.	UNDERGROUND SERVICE ALERT
VCP	VITRIFIED CLAY PIPE
W	WATER
WV	WATER VALVE



VICINITY MAP
NOT TO SCALE

LEGEND

EXISTING		PROPOSED
— 3.0 —	ELECTRICAL CONDUIT	— 3.0 —
— 3.0 —	GROUND CONTOUR	— 3.0 —
— 11.93TC —	TOP OF CURB ELEVATION	— 11.93TC —
— 11.43FL —	FLOW LINE ELEVATION	— 11.43FL —
— 15.50P —	PAVEMENT ELEVATION	— 15.50P —
— 15.50C —	CONCRETE ELEVATION	— 15.50C —
---	PROPERTY & RW LINE	---
— 21"SS —	SANITARY SEWER LINE	— 21"SS —
— 12"SD —	STORM DRAIN LINE	— 12"SD —
— 4"W —	WATER LINE	— 4"W —
— 4"W —	FIRE HYDRANT LINE	— 4"W —
— 4"W —	STREET LIGHT	— 4"W —
— 4"W —	SITE LIGHT	— 4"W —
— 4"W —	CLEANOUT OR LAMPHOLE	— 4"W —
— 4"W —	OVERFLOW AREA DRAIN	— 4"W —
— 4"W —	DRAINAGE INLET	— 4"W —
— 4"W —	CATCH BASIN	— 4"W —
— 4"W —	GATE VALVE	— 4"W —
— 4"W —	FIRE HYDRANT	— 4"W —
— 4"W —	SIGN	— 4"W —
— 4"W —	WATER METER	— 4"W —
— 4"W —	BACKFLOW PREVENTER	— 4"W —
— 4"W —	MAINTENANCE HOLE	— 4"W —

SHEET INDEX

SHEET NO.	DESCRIPTION
1	COVER SHEET
2	GENERAL NOTES
3	EXISTING TOPOGRAPHY & DEMOLITION PLAN
4	PAVEMENT & DIMENSIONING PLAN
5	OVERALL GRADING PLAN
6	OVERALL GRADING PLAN
7	GRADING DETAILS
8	EROSION CONTROL PLAN
9	CONSTRUCTION DETAILS

POINT	NORTHING	EASTING	ELEVATION	DESCRIPTION
19	2180621.950	6332398.320	13.64	BRASS DISK MARKING COS MONUMENT STAMPED "1S-4" IN MONUMENT WELL AT THE INTERSECTION OF THE APPROXIMATE CENTERLINE OF ALPINE AVE AND SUTTER ST. NORTH.

CODES:

ALL WORK SHALL CONFORM TO THE FOLLOWING MODEL CODES:

2022 CALIFORNIA BUILDING CODE (CBC) WITH CITY OF STOCKTON AMENDMENTS.

2022 CALIFORNIA FIRE CODE (FC) WITH CITY OF STOCKTON AMENDMENTS

2022 CALIFORNIA GREEN BUILDING CODE (CGBSC), AS ADOPTED BY THE CITY OF STOCKTON.

2022 CALIFORNIA BUILDING CODE CHAPTER 11B: ACCESSIBILITY TO PUBLIC BUILDINGS, PUBLIC ACCOMMODATIONS, COMMERCIAL BUILDINGS AND PUBLIC HOUSING

NOTE: THE CITY OF STOCKTON BUILDING DIVISION ENFORCES CBC CHAPTERS 11A AND 11B FOR DISABLED ACCESS COMPLIANCE.



DATE SIGNED: 10/16/23

OAK PARK SENIOR CENTER
PARKING LOT IMPROVEMENTS

COVER SHEET

DEPARTMENT OF PUBLIC WORKS
CITY OF STOCKTON, CALIFORNIA

<p>3420 Brookside Road Stockton, CA 95219 Phone: 209-943-2021 Fax: 209-942-0214 www.siegfriedeng.com</p>	Revision No.	Description	Date	By	Appr. By	SCALE AS SHOWN	APPROVED BY: <i>[Signature]</i> DATE: 10/16/23	SHEET NO. 1
	DESIGNED BY	JR				DESIGNED BY	JR	OF 9 SHEETS
	DRAWN BY	JR				DRAWN BY	JR	WD22012
	CHECKED BY	AKM				CHECKED BY	AKM	PROJECT NO.
	RECORD DWGS					RECORD DWGS		5537C

CITY OF STOCKTON GENERAL NOTES

- ALL IMPROVEMENTS SHALL BE CONSTRUCTED IN STRICT ACCORDANCE WITH THE FOLLOWING: CURRENT CITY OF STOCKTON STANDARD SPECIFICATIONS AND PLANS, INCLUSIVE OF ALL CURRENT REVISIONS AND AMENDMENTS, CALIFORNIA DEPARTMENT OF TRANSPORTATION CURRENT STANDARD PLANS AND SPECIFICATIONS (CALTRANS), INCLUSIVE OF ALL CURRENT REVISIONS AND AMENDMENTS, AND CA-MUTCD LATEST EDITION, INCLUSIVE OF ALL CURRENT REVISIONS AND AMENDMENTS THERETO. WHERE THERE IS A CONFLICT BETWEEN THE PLANS AND THE CITY'S STANDARD SPECIFICATIONS AND PLANS, THE CITY OF STOCKTON STANDARD SPECIFICATIONS AND PLANS SHALL PREVAIL. CONTRACTOR SHALL BE RESPONSIBLE FOR CONSTRUCTING THE IMPROVEMENTS IN ACCORDANCE WITH THE ABOVE-MENTIONED STANDARDS AND SPECIFICATIONS.
- THE CONTRACTOR SHALL VISIT THE SITE AND BECOME FAMILIAR WITH THE COMPLETE WORK SCOPE AND ALL RELATED CONDITIONS PRIOR TO BID. ANY QUESTIONS OR DISCREPANCIES WITH THE INFORMATION SHOWN HEREIN MUST BE DIRECTED TO THE ENGINEER PRIOR TO BID.
- THE CONTRACTOR SHALL BE RESPONSIBLE FOR ALL PERMITS AND LICENSES REQUIRED FOR THE CONSTRUCTIONS AND COMPLETION OF THE PROJECT AND SHALL PERFORM ALL WORK IN ACCORDANCE WITH THE REQUIREMENTS AND CONDITIONS OF ALL PERMITS AND APPROVALS APPLICABLE TO THIS PROJECT. THE CONTRACTOR SHALL ENSURE THAT THE NECESSARY PERMITS AND/OR LICENSES ARE SECURED PRIOR TO CONSTRUCTION.
- CONTRACTOR SHALL OBTAIN AN ENCROACHMENT PERMIT FROM THE CITY OF STOCKTON FOR ANY WORK DONE WITHIN CITY RIGHTS-OF-WAY OR ON CITY-OWNED FACILITIES WITHIN AN EASEMENT. CONTRACTOR SHALL CALL THE PERMIT CENTER AT (209) 937-8366 TO REQUEST A CONTROL NUMBER AND ACTIVATE THE PERMIT NO LESS THAN 24 HOURS, BUT NOT IN EXCESS OF 72 HOURS PRIOR TO START OF WORK.
- ALL STATIONS REFER TO DISTANCES ALONG STREET CENTERLINE, UNLESS OTHERWISE NOTED. ALL STATIONS OFF CENTERLINE ARE PERPENDICULAR TO OR RADIIALLY OPPOSITE CENTERLINE STATIONS.
- THE CONTRACTOR SHALL RECEIVE PRIOR APPROVAL FROM THE ENGINEER FOR ANY EXTRA WORK. THE CONTRACTOR SHALL BE HELD RESPONSIBLE FOR ANY FIELD CHANGES MADE WITHOUT PRIOR WRITTEN AUTHORIZATION FROM THE ENGINEER AT NO ADDITIONAL COST TO THE CITY.
- THE CONTRACTOR SHALL BE RESPONSIBLE FOR PROTECTING FROM DAMAGE ALL EXISTING AND NEWLY PLACED IMPROVEMENTS THAT ARE TO REMAIN. SUCH IMPROVEMENTS THAT ARE DAMAGED BY THE CONTRACTOR SHALL BE REPLACED AT NO ADDITIONAL COST TO THE CITY.
- THE CONTRACTOR AGREES THAT HE SHALL ASSUME SOLE AND COMPLETE RESPONSIBILITY FOR JOB SITE CONDITIONS DURING THE COURSE OF CONSTRUCTION OF THIS PROJECT INCLUDING SAFETY AND SECURITY OF JOB SITE, THAT THIS REQUIREMENT SHALL APPLY CONTINUOUSLY AND NOT BE LIMITED TO NORMAL WORKING HOURS.
- THE CONTRACTOR SHALL MAINTAIN A NEATLY MARKED SET OF FULL-SIZE AS-BUILT DRAWINGS SHOWING THE FINAL LOCATION OF FINAL IMPROVEMENTS. AS-BUILT DRAWINGS SHALL REFLECT CHANGE ORDERS, ACCOMMODATIONS, AND ADJUSTMENTS TO ALL IMPROVEMENTS CONSTRUCTED. WHERE NECESSARY, SUPPLEMENTAL DRAWINGS SHALL BE PREPARED AND SUBMITTED BY THE CONTRACTOR.
- PRIOR TO ACCEPTANCE OF THE PROJECT, THE CONTRACTOR SHALL DELIVER TO THE ENGINEER, ONE SET OF NEATLY MARKED AS-BUILT DRAWINGS. AS-BUILT DRAWINGS SHALL BE REVIEWED AND THE COMPLETE AS-BUILT DRAWING SET SHALL BE CURRENT WITH ALL CHANGES AND DEVIATIONS REDLINED AS A PRECONDITION TO THE FINAL PROGRESS PAYMENT APPROVAL AND/OR FINAL ACCEPTANCE.
- ALL TRENCH EXCAVATION SHALL BE IN ACCORDANCE WITH SECTION 7 OF THE CITY OF STOCKTON STANDARD SPECIFICATIONS.
- THE CONTRACTOR SHALL PROVIDE ALL SHORING, BRACING, SLOPING OR OTHER PROVISIONS NECESSARY TO PROTECT WORKERS FOR ALL AREAS TO BE EXCAVATED TO A DEPTH OF 5' OR MORE. EXCAVATIONS OF 5 FEET OR MORE IN DEPTH WILL REQUIRE AN EXCAVATIONS PERMIT FROM THE STATE OF CALIFORNIA DEPARTMENT OF INDUSTRIAL SAFETY FOR TRENCHES 5 FEET OR MORE IN DEPTH, THE CONTRACTOR SHALL COMPLY WITH SECTION 7-1.02K(6)(b) OF THE CALTRANS STANDARDS, SECTION 6705 OF THE STATE OF CALIFORNIA LABOR CODE, AND ANY LOCAL CODES OR ORDINANCES.
- ATTENTION IS CALLED TO: SECTION 1541(b)(1) OF THE CONSTRUCTION SAFETY ORDERS (CALIFORNIA CODE OF REGULATIONS, TITLE 9), ISSUED BY THE OCCUPATIONAL SAFETY AND HEALTH STANDARDS BOARD PURSUANT TO THE CALIFORNIA OCCUPATIONAL SAFETY AND HEALTH ACT OF 1973, WHICH STATES: "THE APPROXIMATE LOCATION OF SUBSURFACE INSTALLATIONS, SUCH AS SEWER, TELEPHONE, FUEL, ELECTRIC, WATER LINES, OR ANY OTHER SUBSURFACE INSTALLATIONS THAT REASONABLY MAY BE EXPECTED TO BE ENCOUNTERED DURING EXCAVATION WORK, SHALL BE DETERMINED BY THE EXCAVATOR PRIOR TO OPENING AN EXCAVATION."
- IT SHALL BE CONTRACTOR'S SOLE RESPONSIBILITY TO PROTECT ALL EXISTING UTILITIES SO THAT NO DAMAGE RESULTS TO THEM DURING THE PERFORMANCE OF HIS CONTRACT. THE CONTRACTOR SHALL BE REQUIRED TO COOPERATE WITH OTHER CONTRACTORS AND UTILITY COMPANIES INSTALLING NEW OR MODIFIED STRUCTURES, UTILITIES AND SERVICES WITHIN THE PROJECT LIMITS.
- THE CONTRACTOR SHALL EXERCISE DUE CAUTION AND SHALL CAREFULLY PRESERVE BENCH MARKS, CONTROL POINTS, REFERENCE POINTS AND ALL SURVEY MONUMENTS, AND SHALL BEAR ALL EXPENSES FOR REPLACEMENT AND/OR ERROR CAUSED BY HIS UNNECESSARY LOSS OR DISTURBANCE. THE CONTRACTOR SHALL CONSULT WITH A LICENSED LAND SURVEYOR OR CIVIL ENGINEER LICENSED TO PRACTICE LAND SURVEYING IN CALIFORNIA PRIOR TO BEGINNING CONSTRUCTION TO ENSURE THAT ANY PRECONSTRUCTION CORNER RECORDS, AS REQUIRED BY THE STATE OF CALIFORNIA PROFESSIONAL LAND SURVEYOR ACT HAVE BEEN FILED WITH THE COUNTY SURVEYOR, PURSUANT TO SECTION 8771(a-f) OF THE CALIFORNIA BUSINESS AND PROFESSION CODE.
- ALL WORK IN THE PUBLIC RIGHT-OF-WAY IS SUBJECT TO THE APPROVAL AND ACCEPTANCE OF THE ENGINEER.
- PRIOR TO PLACEMENT OF ANY FINISH ASPHALT CONCRETE OR CONCRETE, THE CONTRACTOR SHALL VERIFY ALL FINISH GRADES AND SLOPES FOR COMPLIANCE WITH THE AMERICANS WITH DISABILITIES ACT (ADA) AND OBTAIN APPROVAL AND ACCEPTANCE BY THE ENGINEER.
- THE CONTRACTOR SHALL LAYOUT IMPROVEMENTS FROM THE DIMENSIONS SHOWN ON THE PLANS. ANY CLARIFICATION OR CONFLICTS, DISCREPANCIES OR AMBIGUITIES SHALL BE DIRECTED TO THE ENGINEER PRIOR TO THE CONSTRUCTION OF THE IMPROVEMENTS.
- DUST CONTROL SHALL BE PERFORMED AT ALL TIMES, AT THE CONTRACTORS' EXPENSE, TO MINIMIZE ANY DUST NUISANCE AND SHALL BE IN ACCORDANCE WITH SECTION 10-5 OF CALTRANS STANDARD SPECIFICATIONS AND THE REQUIREMENTS OF THE CITY OF STOCKTON.
- THE CONTRACTOR SHALL MAINTAIN ALL EXISTING WATER, SEWER, AND DRAINAGE FACILITIES WITHIN THE CONSTRUCTION AREA UNTIL NEW IMPROVEMENTS ARE IN PLACE AND FUNCTIONING, EXCEPT WHERE OTHERWISE APPROVED.
- INGRESS AND EGRESS BY PROPERTY OWNERS, BUSINESSES, AND OTHERS SHALL BE PROVIDED AT ALL TIMES DURING THE COURSE OF CONSTRUCTION UNLESS OTHERWISE APPROVED OR SPECIFIED.
- SIDEWALK REMOVAL SHALL BE TO THE NEAREST SCORE MARK OR AS DETERMINED BY THE ENGINEER. CONTRACTOR SHALL NEATLY SAW-CUT CONCRETE WHERE PULL BOXES ARE TO BE PLACED AND SHALL RESTORE THE SLAB TO MATCH THE EXISTING CONDITION.

STRIPING AND SIGNAGE NOTES:

- THE CONTRACTOR SHALL PROVIDE ALL LIGHTS, BARRICADES, SIGNS, FLAGMEN OR OTHER DEVICES NECESSARY FOR PUBLIC SAFETY.
- THE CONTRACTOR SHALL SUBMIT A TRAFFIC CONTROL AND/OR DETOUR PLAN FOR APPROVAL BY THE CITY OF STOCKTON TRAFFIC ENGINEER PRIOR TO THE START OF CONSTRUCTION.
- ALL PAVEMENT MARKINGS, STRIPING AND CROSSWALKS SHALL BE ~~PAINTED~~ **traffic paint**.
- STRIPING AND PAVEMENT MARKINGS SHALL BE IN STRICT CONFORMANCE WITH THE CA-MUTCD (LATEST EDITION) AND THE SPECIAL PROVISIONS SECTION 84. LONGITUDINAL STRIPING EXCLUDED, PAVEMENT MARKINGS SHALL ALSO CONFORM TO THE CALTRANS SPECIFICATIONS (LATEST EDITION) SECTION 84.
- SIGNING SHALL CONFORM TO THE CA-MUTCD (LATEST EDITION) AND CALTRANS SPECIFICATIONS (LATEST EDITION) SECTION 82.
- REMOVAL OF EXISTING PAVEMENT MARKINGS SHALL BE REMOVED BY GRINDING PER CALTRANS STANDARDS SPECIFICATIONS SECTION 84-9.
- CONTRACTOR SHALL INSTALL A BLUE REFLECTOR ON FIRE HYDRANT SIDE AT ALL FIRE HYDRANT LOCATIONS PER CA-MUTCD, SECTION 3B.11 AND FIGURE 3B-102.
- THE CONTRACTOR SHALL NOTIFY THE ENGINEER A MINIMUM OF THREE (3) WORKING DAYS IN ADVANCE OF THE LAYOUT AND CAT-TRACKING OF THE PROPOSED IMPROVEMENTS. CAT-TRACKING TO BE APPROVED BY TRAFFIC ENGINEERING PRIOR TO FINAL ACCEPTANCE OF STRIPING AND PAVEMENT MARKINGS.
- THE CONTRACTOR SHALL ENSURE THAT THE APPROPRIATE STRIPING AND PAVEMENT MARKINGS ARE IN PLACE AT ALL TIMES. TEMPORARY STRIPING AND/OR PAVEMENT MARKINGS SHALL BE INSTALLED TO REPLACE ANY EXISTING STRIPING OR MARKINGS WHICH HAVE BEEN REMOVED. ANY CONFLICTING STRIPING SHALL BE REMOVED IMMEDIATELY BY THE CONTRACTOR PRIOR TO REOPENING THE STREET TO TRAFFIC.
- THE CONTRACTOR SHALL REMOVE ANY EXISTING SIGNS IN CONFLICT WITH THESE PLANS AS DIRECTED BY THE CITY TRAFFIC ENGINEER. EXISTING STRIPING AND MARKINGS IN CONFLICT WITH THESE PLANS SHALL BE REMOVED BY THE CONTRACTOR. PAVEMENT SHALL BE REPAIRED IF DAMAGED IN CONJUNCTION WITH REMOVAL OF MARKERS.
- ALL DIMENSIONS SHOWN ARE FROM FACE OF CURB, UNLESS OTHERWISE NOTED.
- THE CONTRACTOR SHALL REPLACE ANY PAVEMENT DELINEATION AND TRAFFIC MARKINGS THAT ARE DAMAGED DURING THE COURSE OF WORK AT NO ADDITIONAL COST TO THE CITY.
- CONSTRUCTION PERIMETER FENCING SHALL BE FURNISHED, INSTALLED AND REMOVED IN ACCORDANCE WITH CALTRANS STANDARD SPECIFICATION SECTIONS 16, TEMPORARY FACILITIES AND SECTION 80, FENCES AND THE PROJECT PLANS AND SPECIFICATIONS.

GEOTECHNICAL NOTES

- CONTRACTOR TO REFERENCE GEOTECHNICAL INVESTIGATION FOR ALL SUBGRADE PREPARATION, PAVEMENT RECOMMENDATIONS, SLAB ON GRADE THICKNESS, ETC. AND COMPARE WITH ANY RECOMMENDATIONS ON THE PLANS, IF ANY DISCREPANCIES EXISTING NOTIFY THE ENGINEERS IMMEDIATELY.
- GEOTECHNICAL ENGINEERING SERVICES INVESTIGATION PREPARED BY SIEGFRIED ENGINEERING, DATED JANUARY 27, 2023.



DATE SIGNED: 10/16/23

OAK PARK SENIOR CENTER
PARKING LOT IMPROVEMENTS

GENERAL NOTES

DEPARTMENT OF PUBLIC WORKS
CITY OF STOCKTON, CALIFORNIA

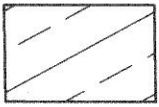
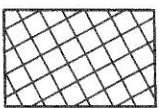




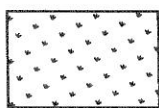
SCALE	AS SHOWN	APPROVED BY	DATE	SHEET NO.
DESIGNED BY	JR		10/16/23	2
DRAWN BY	JR			OF 9 SHEETS
CHECKED BY	AKM			WB2012
RECORD DWGS.				PROJECT NO.

SIEGFRIED
 5428 Brookside Road
 Stockton, CA 95219
 Phone: 209-943-2021
 Fax: 209-942-0214
 www.siefriedeng.com

- CIVIL ENGINEERING
- STRUCTURAL ENGINEERING
- LANDSCAPE ARCHITECTURE
- LAND SURVEYING
- PLANNING
- ATHLETIC FACILITY DESIGN



LEGEND

-  MINIMUM 2" GRIND. REMOVE AND DISPOSE OF EXISTING ASPHALT PAVEMENT. REMOVAL SHALL ACCOMMODATE THE PROPOSED IMPROVEMENTS, INCLUDING REMOVAL OF ALL STRIPING.
-  FULL DEPTH REMOVAL. REMOVE AND DISPOSE OF EXISTING ASPHALT PAVEMENT AND SUBGRADE. REMOVAL SHALL ACCOMMODATE THE PROPOSED IMPROVEMENTS, INCLUDING REMOVAL OF ALL STRIPING. FOR NEW PAVEMENT SECTION SEE LEGEND ON SHEET 4.
-  CONCRETE REMOVAL. REMOVE AND DISPOSE OF EXISTING CONCRETE AND SUBGRADE. REMOVAL SHALL ACCOMMODATE THE PROPOSED IMPROVEMENTS. FOR NEW CONCRETE SECTION SEE LEGEND ON SHEET 4.
-  EXISTING CONCRETE TO REMAIN
-  EXISTING STORM DRAIN LINE
-  EXISTING SANITARY SEWER LINE
-  CLEAR & GRUB. REMOVAL SHALL ACCOMMODATE THE ALTERNATIVE BID ITEM FOR ADA RAMP IMPROVEMENTS.

NOTES:

1. CONTRACTOR IS RESPONSIBLE FOR REMOVING AND PROPERLY DISPOSING OF ALL MATERIALS DEMOLISHED FROM THE SITE INCLUDING: PAVEMENT, CONCRETE, CURB AND GUTTER, STORM DRAINAGE MATERIALS AND ELECTRICAL MATERIALS.
2. ANYTHING NOT CALLED OUT TO BE REMOVED SHALL BE PROTECTED IN PLACE, AND IF DAMAGED, SHALL BE REPLACED / REPAIRED AT THE CONTRACTOR'S EXPENSE.
3. ALL EXISTING UTILITIES WERE PLOTTED FROM RECORD INFORMATION AND FIELD TOPOGRAPHY. ACTUAL LOCATIONS MAY VARY AND ADDITIONAL CROSSINGS MAY EXIST IN THE FIELD. IT IS IMPERATIVE THAT "U.S.A. LOCATING SERVICES" LOCATE AND MARK EXISTING UTILITIES PRIOR TO THE START OF EXCAVATION.
4. THE CONTRACTOR SHALL USE EXTREME CAUTION WHEN EXPOSING EXISTING UTILITY CROSSINGS AND SERVICES.
6. LANDSCAPE PROTECTION AND DEMOLITION TO BE PERFORMED BY LANDSCAPE CONTRACTOR(S). CONTRACTOR TO COORDINATE EARTH MOVING AND DEMOLITION OPERATIONS WITH LANDSCAPE CONTRACTOR(S).
7. BOLD ITEMS TO BE REMOVED UNLESS OTHERWISE NOTED.

PROTECTION KEY NOTES

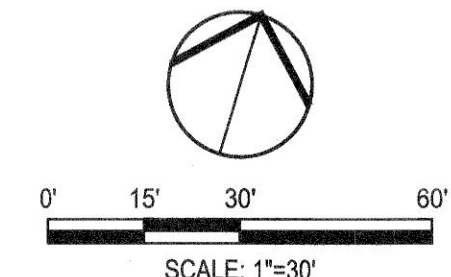
- 1. APPROXIMATE RIGHT OF WAY / PROPERTY LINE.
- 6. PROTECT EXISTING ELECTRIC CABINET IN PLACE.
- 2. PROTECT IN PLACE EXISTING CURB.
- 7. PROTECT EXISTING STORM DRAIN MANHOLE / INLET IN PLACE. CONTRACTOR TO UNLOG/CLEANOUT ALL STORM DRAIN INLETS.
- 3. PROTECT IN PLACE EXISTING FIRE HYDRANT.
- 8. LIMITS FOR PAVEMENT REHABILITATION IMPROVEMENTS.
- 4. PROTECT IN PLACE EXISTING OVERHEAD POLE.
- 9. PROTECT IN PLACE EXISTING CONCRETE V-DITCH
- 5. PROTECT EXISTING SITE LIGHT.
- 10. PROTECT IN PLACE EXISTING ASPHALT. NOT PART OF SCOPE

REMOVAL KEY NOTES

- 1. REMOVE AND DISPOSE EXISTING SPEED BUMP. REMOVAL SHALL ACCOMMODATE THE PROPOSED IMPROVEMENTS.
- 2. REMOVE AND DISPOSE EXISTING ASPHALT CURB. REMOVAL SHALL ACCOMMODATE THE PROPOSED IMPROVEMENTS.
- 3. REMOVE EXISTING ADA STRIPING BY GRINDING. SEE SHEET 4 FOR PROPOSED ACCESSIBLE STRIPING LOCATIONS (TYP).
- 4. REMOVE AND DISPOSE EXISTING ADA POST AND SIGNAGE.
- 5. REMOVE AND DISPOSE EXISTING ADA SIGNAGE. SALVAGE POST TO REINSTALL ACCESSIBLE PARKING SIGNAGE PER DETAIL 2 ON SHEET 9.
- 6. FOR ALTERNATE BID. REMOVE AND DISPOSE EXISTING CONCRETE CURB AND GUTTER
- 7. FOR ALTERNATE BID. REMOVE AND DISPOSE EXISTING ADA CONCRETE RAMP. REMOVAL SHALL ACCOMMODATE THE PROPOSED IMPROVEMENTS.
- 8. FOR ALTERNATE BID. REMOVE AND DISPOSE FULL DEPTH EXISTING DRIVEWAY. REMOVAL SHALL ACCOMMODATE THE PROPOSED DRIVEWAY AND ACCESSIBLE RAMPS IMPROVEMENTS.
- 9. SAWCUT A NEAT, STRAIGHT LINE AT NEAREST JOINT



DATE SIGNED: 10/16/23

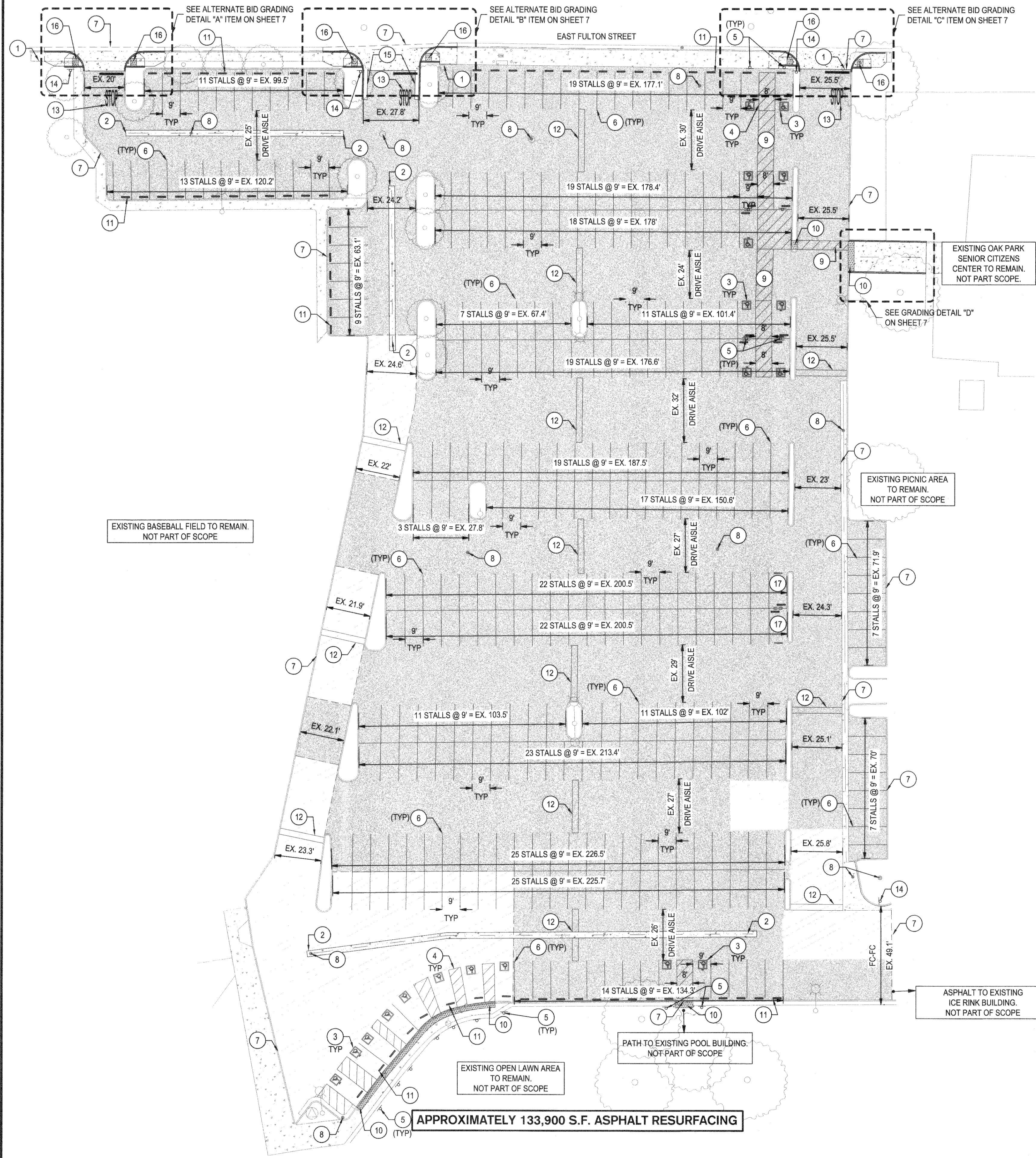


**OAK PARK SENIOR CENTER
PARKING LOT IMPROVEMENTS
EXISTING TOPOGRAPHY &
DEMOLITION PLAN**

DEPARTMENT OF PUBLIC WORKS CITY OF STOCKTON, CALIFORNIA	
SCALE: AS SHOWN	APPROVED BY: <i>[Signature]</i>
DESIGNED BY: JR	DATE: _____
DRAWN BY: JR	
CHECKED BY: AKM	CITY ENGINEER
RECORD DWGS.	STOCKTON, CALIFORNIA
SHEET NO. 3 OF 2 SHEETS	PROJECT NO. WD22012

SIEGFRIED
3428 Brookside Road
Stockton, CA 95219
Phone: 209-943-2021
Fax: 209-942-0214
www.siegfriedeng.com

- CIVIL ENGINEERING
- STRUCTURAL ENGINEERING
- LANDSCAPE ARCHITECTURE
- LAND SURVEYING
- PLANNING
- ATHLETIC FACILITY DESIGN



- LEGEND**
- VEHICULAR ASPHALT PAVEMENT
MINIMUM 2" HMA INLAY OVER TENSAR GLASPAVE 25 WITH PG GRADE BINDER.
 - VEHICULAR ASPHALT PAVEMENT T.I.=4
3.0" AC OVER 6" CLASS II AB OVER SUBGRADE PREPARED PER PROJECT'S GEOTECHNICAL RECOMMENDATIONS. LIFTS SHOULD NOT BE MORE THAN 3 TIMES AGGREGATE BASE SIZE. TACK COAT SHALL BE APPLIED BETWEEN LIFTS.
 - CONCRETE
6.0" (3000 PSI) CONCRETE WITH #3 BARS AT 18" O.C. EACH WAY OVER 4.0" CLASS II AB OVER SUBGRADE PREPARED PER PROJECT'S GEOTECHNICAL RECOMMENDATIONS.
 - TRUNCATED DOMES
TRUNCATED DOMES COMPLYING WITH CBC 11B-705. SEE DETAIL 4 ON SHEET 9.
 - EXISTING CONCRETE TO REMAIN

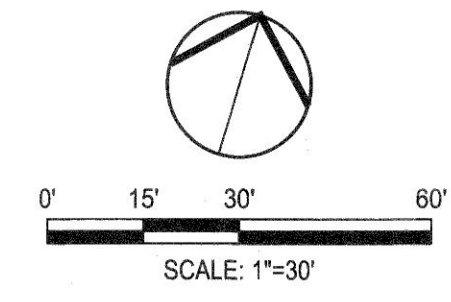
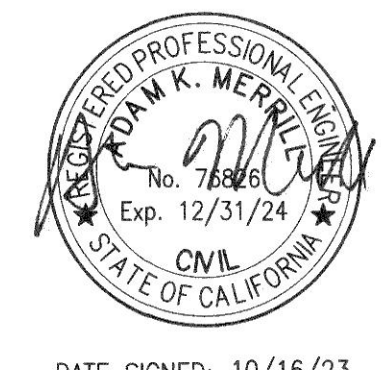
- ALL MATERIAL AND CONSTRUCTION PROCEDURES WITHIN THE SCOPE OF THIS PROJECT SHALL CONFORM TO ALL APPLICABLE CITY OF STOCKTON STANDARD SPECIFICATIONS (LATEST EDITION).
1. CONTRACTOR SHALL IMMEDIATELY NOTIFY ENGINEER OF ANY QUESTION THAT MAY ARISE CONCERNING THE INTENT, PLACEMENT, OR LIMITS OF DIMENSIONS NECESSARY FOR CONSTRUCTION OF THIS PROJECT.
 2. ALL DIMENSIONS ARE TO FACE OF CURB, FACE OF BUILDING, CENTER OF PAINT STRIPING OR PERPENDICULAR TO THE PROPERTY LINE. CONTRACTOR SHALL VERIFY DIMENSIONS MATCH STRUCTURAL AND ARCHITECTURAL PLANS PRIOR TO CONSTRUCTION.
 3. ALL COORDINATE POINTS ARE AT FACE OF CURB OR RADIUS POINT. BUILDING CONTROL POINTS ARE AT THE OUTER MOST EDGE OF THE BUILDING ENVELOPE.
 4. THE CONTRACTOR SHALL SAWCUT EXISTING PAVEMENT, CURBS, AND SIDEWALKS AT NEW PAVEMENT, CURB AND SIDEWALK JUNCTURES. NO JAGGED OR IRREGULAR CUTS WILL BE ALLOWED OR ACCEPTED.
 5. ALL PAINT SHALL BE 4" WIDE REFLECTIVE PAINT. WHITE ON TOP OF 6" WIDE BLACK STRIPE ON CONCRETE UNLESS OTHERWISE NOTED ON THE DRAWINGS.
 6. ALL PAVEMENT MARKINGS SHALL RECEIVE TWO COATS OF PAINT.
 7. ALL SIGNS SHALL CONFORM TO MUTCD, LATEST EDITION.
 8. ALL CURBS ARE 6" HIGH UNLESS OTHERWISE NOTED.
 9. CONTRACTOR TO REFER TO GEOTECHNICAL REPORT FOR CONSTRUCTION JOINT SPACING REQUIREMENTS IN CONCRETE PAVEMENT.
 10. ALL CRACKED, DAMAGED, OR DISPLACED CONCRETE CURB, GUTTER, AND SIDEWALK TO BE REMOVED AND REPLACED TO CURRENT CITY STANDARDS.

- KEYNOTES**
- | | |
|--|--|
| 1. APPROXIMATE RIGHT OF WAY / PROPERTY LINE | 10. INSTALL TRUNCATED DOMES COMPLYING WITH CBC 11B-705. SEE DETAIL 4 ON SHEET 9. |
| 2. INSTALL 3" CONCRETE V-DITCH. SEE DETAIL 8 ON SHEET 9. | 11. INSTALL 4" WHEELSTOP (TYP). SEE DETAIL 7 ON SHEET 9. |
| 3. INSTALL ACCESSIBLE SYMBOL. SEE DETAIL 3 ON SHEET 9. | 12. INSTALL 3" WIDE RUBBER SPEED HUMP. SEE DETAIL 6 ON SHEET 9. |
| 4. INSTALL ACCESSIBLE STRIPING. SEE DETAIL 1 ON SHEET 9. | 13. INSTALL "STOP" PAVEMENT MARKINGS AND STOP BAR STRIPING PER CAMUTCD FIGURE 3B-20. |
| 5. INSTALL ACCESSIBLE PARKING SIGNAGE PER DETAIL 2, SHEET 9. | 14. INSTALL TOW AWAY SIGNAGE PER DETAIL 5 ON SHEET 9. |
| 6. PARKING SPACES SHALL BE CLEARLY OUTLINED WITH 4" WHITE WIDE LINES PAINTED ON THE SURFACE. | 15. INSTALL 6" CONCRETE VERTICAL CURB AND GUTTER. SEE C.O.S STD. DWG. R-52. |
| 7. LIMITS FOR PAVEMENT REHABILITATION IMPROVEMENTS. | 16. ALTERNATE BID ITEM.
INSTALL ACCESSIBLE RAMPS AND COMMERCIAL DRIVE PER C.O.S STANDRD DWG. R-59 |
| 8. PROTECT EXISTING STORM DRAIN MANHOLE / INLET IN PLACE.
CONTRACTOR TO UNCLOG/CLEANOUT ALL STORM DRAIN INLETS. | 17. NOT PART OF SCOPE.
STALLS RESERVED FOR CHARGING STATION WITH CHARGING UNIT. |
| 9. 4" WIDE, 3" O.C. BLUE STRIPING BORDER AND HATCHING FOR ACCESSIBLE CROSSWALK. SEE DETAIL "C" ON SHEET 4.
NOTE: BORDER SHALL BE BLUE PAINT & HATCHING SHALL BE CONTRASTING WITH SURFACE.
CONTRACTOR SHALL USE WHITE PAINT ON ASPHALT & BLUE PAINT ON CONCRETE. SEE CBC 11B-502.3.3. | |

RESTRIPING PARKING SUMMARY:

STANDARD STALLS:	321 STALLS
VAN ACCESSIBLE:	8 STALLS
ACCESSIBLE:	11 STALLS
TOTAL ACCESSIBLE:	19 STALLS
TOTAL PARKING STALLS:	340 STALLS

PER 2022 CBC TABLE 11B-208.2:
REQUIRED NUMBER OF ACCESSIBLE STALLS: 8 (2 VAN)
(1 ACCESSIBLE VAN STALL REQUIRED PER EVERY SIX ACCESSIBLE STALLS)

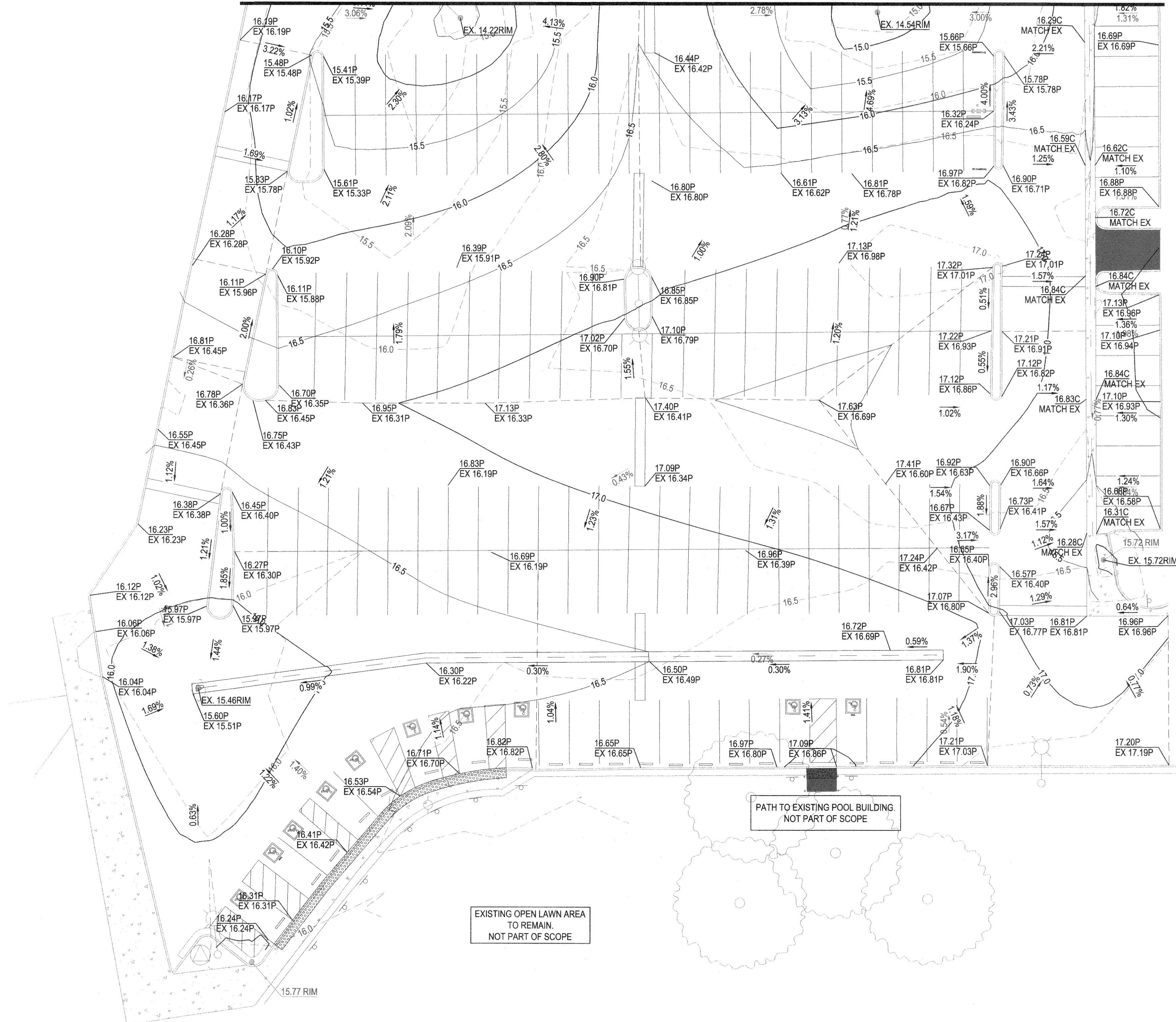


**OAK PARK SENIOR CENTER
PARKING LOT IMPROVEMENTS**

PAVEMENT & DIMENSIONING PLAN

 3428 Brookside Road Stockton, CA 95219 Phone: 209-943-2021 Fax: 209-942-0214 www.siegfriedeng.com	Revision No.	Description	Date	By	Apprv. By	DEPARTMENT OF PUBLIC WORKS CITY OF STOCKTON, CALIFORNIA	SCALE AS SHOWN DESIGNED BY JR DRAWN BY JR CHECKED BY AKM RECORD DWGS.	APPROVED BY: <i>[Signature]</i> DATE: 4/16/23	SHEET NO. 4 OF 2 SHEETS WD22012 PROJECT NO.
	PER 2022 CBC TABLE 11B-208.2: REQUIRED NUMBER OF ACCESSIBLE STALLS: 8 (2 VAN) (1 ACCESSIBLE VAN STALL REQUIRED PER EVERY SIX ACCESSIBLE STALLS)						DATE SIGNED: 10/16/23		
	APPROXIMATELY 133,900 S.F. ASPHALT RESURFACING						CITY ENGINEER STOCKTON, CALIFORNIA		
	APPROXIMATE RIGHT OF WAY / PROPERTY LINE						PROJECT NO.		

FOR CONTINUATION SEE SHEET 5



EXISTING OAK PARK SENIOR CITIZENS CENTER TO REMAIN. NOT PART OF SCOPE.

EXISTING PICNIC AREA TO REMAIN. NOT PART OF SCOPE.

EXISTING BASEBALL FIELD TO REMAIN. NOT PART OF SCOPE.

ASPHALT TO EXISTING ICE RINK BUILDING. NOT PART OF SCOPE.

PATH TO EXISTING POOL BUILDING. NOT PART OF SCOPE.

EXISTING OPEN LAWN AREA TO REMAIN. NOT PART OF SCOPE.

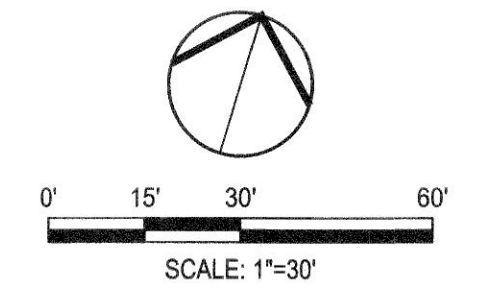
LEGEND

EXISTING	PROPOSED
GRADE SLOPE PERCENTAGE	GRADE SLOPE PERCENTAGE
GROUND CONTOUR	GROUND CONTOUR
PAVEMENT ELEVATION	PAVEMENT ELEVATION
CONCRETE ELEVATION	CONCRETE ELEVATION
RIDGE / GRADE BREAK LINE	RIDGE / GRADE BREAK LINE

GRADING LEGEND

ABBREVIATION	DESCRIPTION
BW	BACK OF WALK
BW	BOTTOM OF WALK
C	CONCRETE
DG	DECOMPOSED GRANITE
EC	EXISTING CONCRETE
EFL	EXISTING FLOWLINE
EG	EXISTING GROUND
EL	ELEVATION
EP	EXISTING PAVEMENT
EX	EXISTING
FF	FINISHED FLOOR ELEVATION
FG	FINISH GROUND
FP	FINISH PAD ELEVATION
FL	FLOWLINE
G	GROUND
GB	GRADE BREAK
HP	HIGH POINT
LB	LIGHT BASE
LP	LOW POINT
MAX	MAXIMUM
MIN	MINIMUM
P	PAVEMENT
TC	TOP OF CURB
TOW	TOP OF WALL
TYP	TYPICAL

NOTE:
EXISTING PAVEMENT CONDITIONS ARE POOR, UNEVEN, AND GRADES ARE INCONSISTENT. CONTRACTOR SHALL GRIND A MINIMUM OF 2 INCHES WHEREVER A FULL DEPTH SECTION IS NOT REQUIRED. HOWEVER, SOME PAVEMENT AREAS MAY REQUIRE OVER 2 INCHES OF GRIND IN ORDER TO HAVE A SMOOTH FINISH AND CONSISTENT PAVEMENT SURFACE. SEE PAVEMENT SHEET 4 FOR FULL DEPTH PAVEMENT LOCATIONS.



DATE SIGNED: 10/16/23

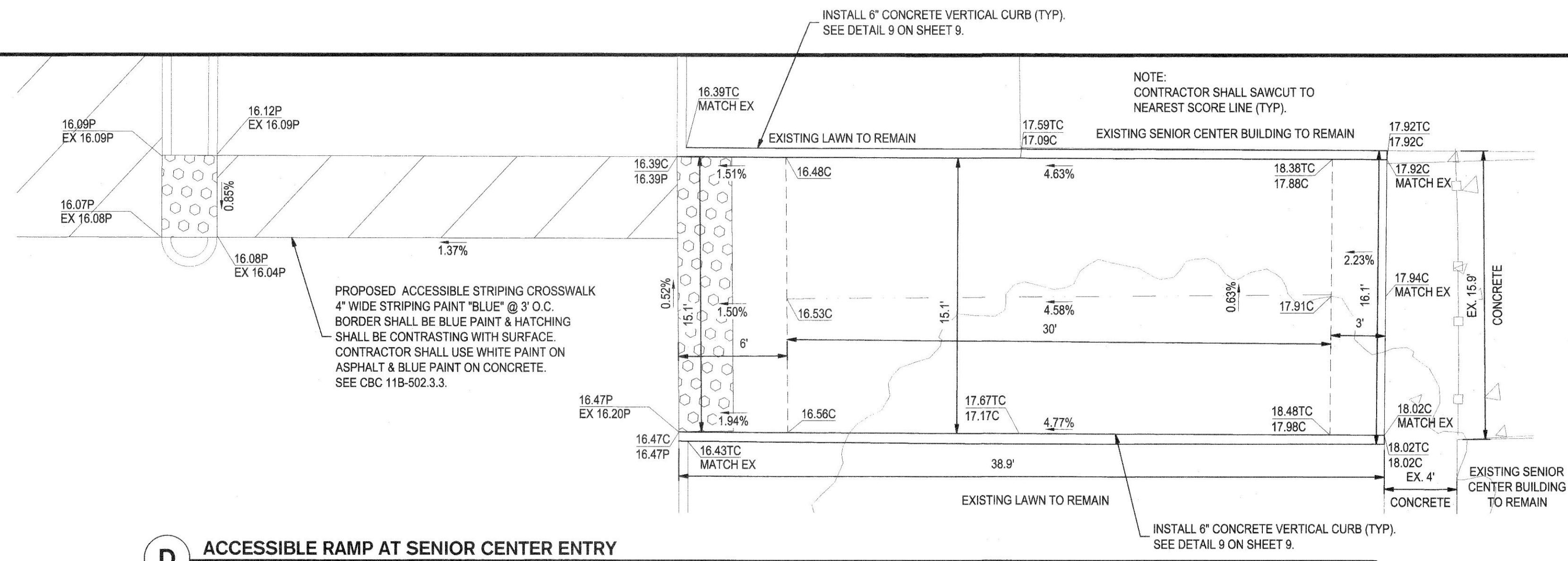
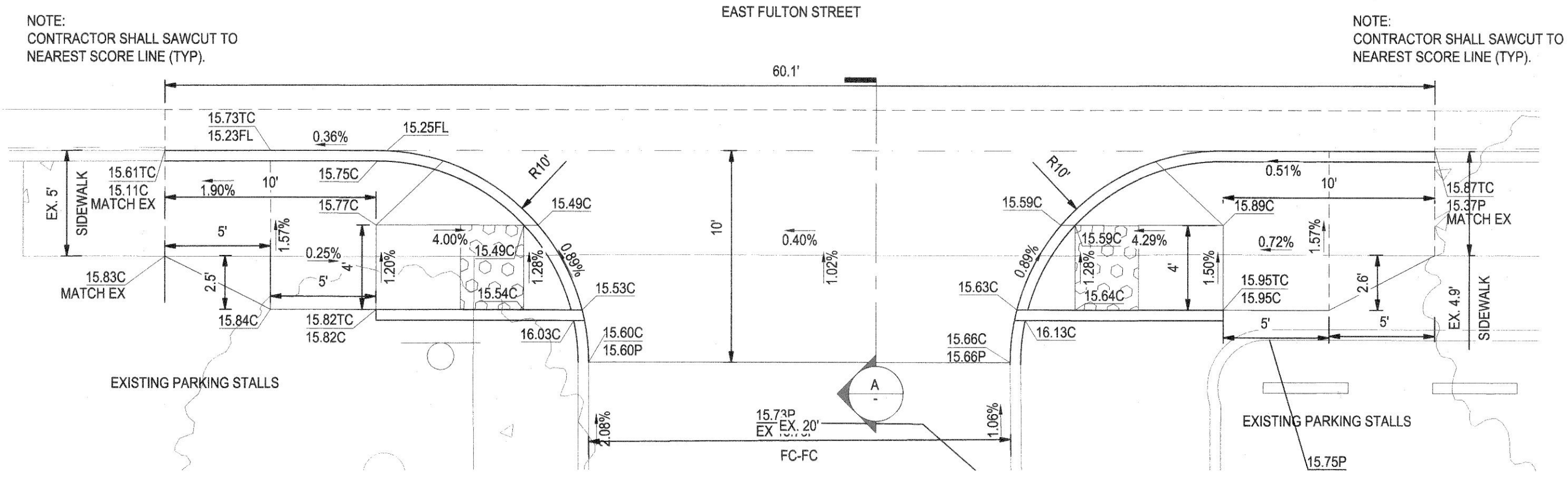
**OAK PARK SENIOR CENTER
PARKING LOT IMPROVEMENTS
OVERALL GRADING PLAN**

DEPARTMENT OF PUBLIC WORKS CITY OF STOCKTON, CALIFORNIA	
SCALE AS SHOWN	APPROVED BY:
DESIGNED BY: JR	DATE: 10/16/23
DRAWN BY: JR	CITY ENGINEER
CHECKED BY: AKM	STOCKTON, CALIFORNIA
RECORD DWGS.	PROJECT NO. 5537C.5

SIEGFRIED
3428 Brookside Road
Stockton, CA 95219
Phone: 209-943-2021
Fax: 209-942-0214
www.siegfriedeng.com

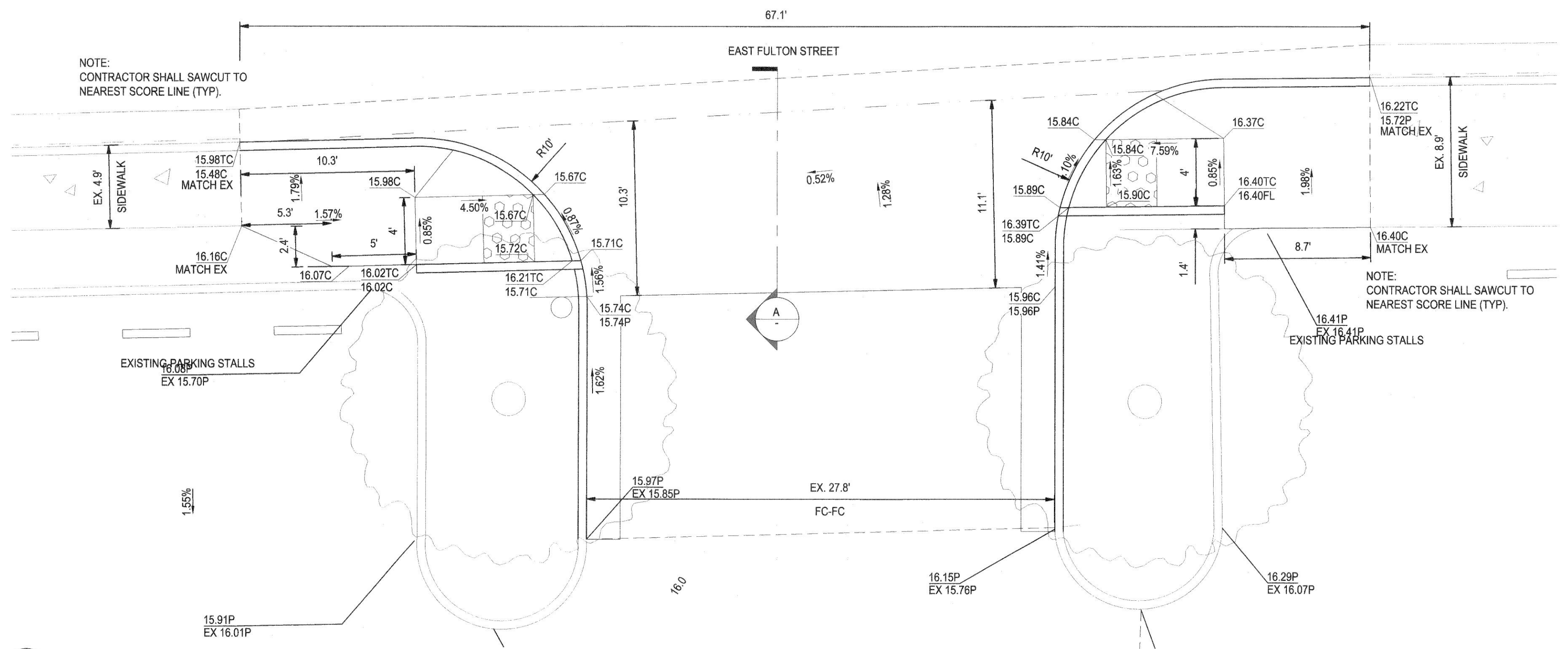
- CIVIL ENGINEERING
- STRUCTURAL ENGINEERING
- LANDSCAPE ARCHITECTURE
- LAND SURVEYING
- PLANNING
- ATHLETIC FACILITY DESIGN

Revision No.	Description	Date	By	Apprv. By

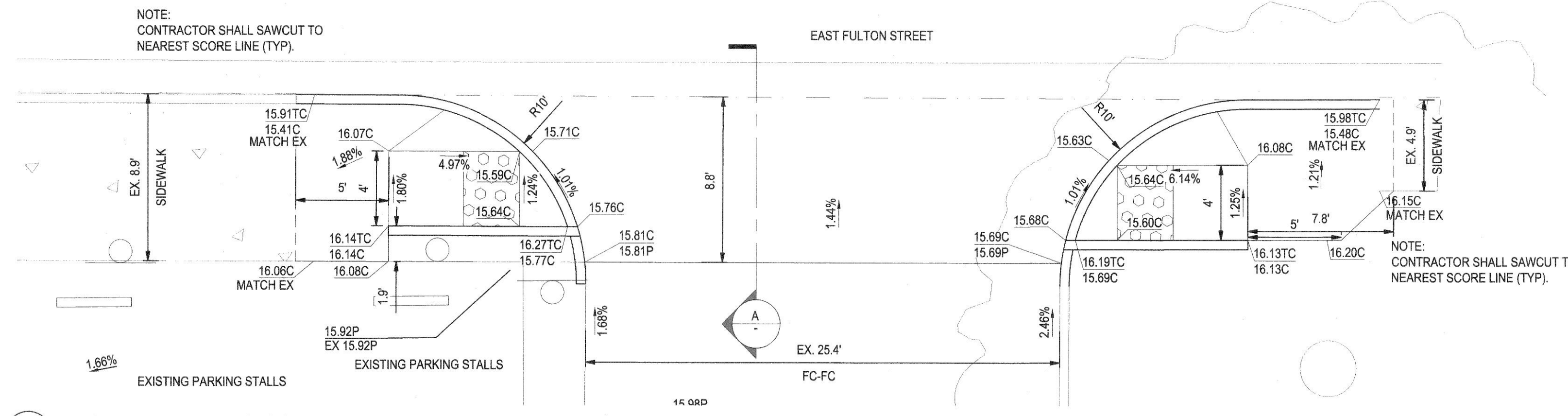
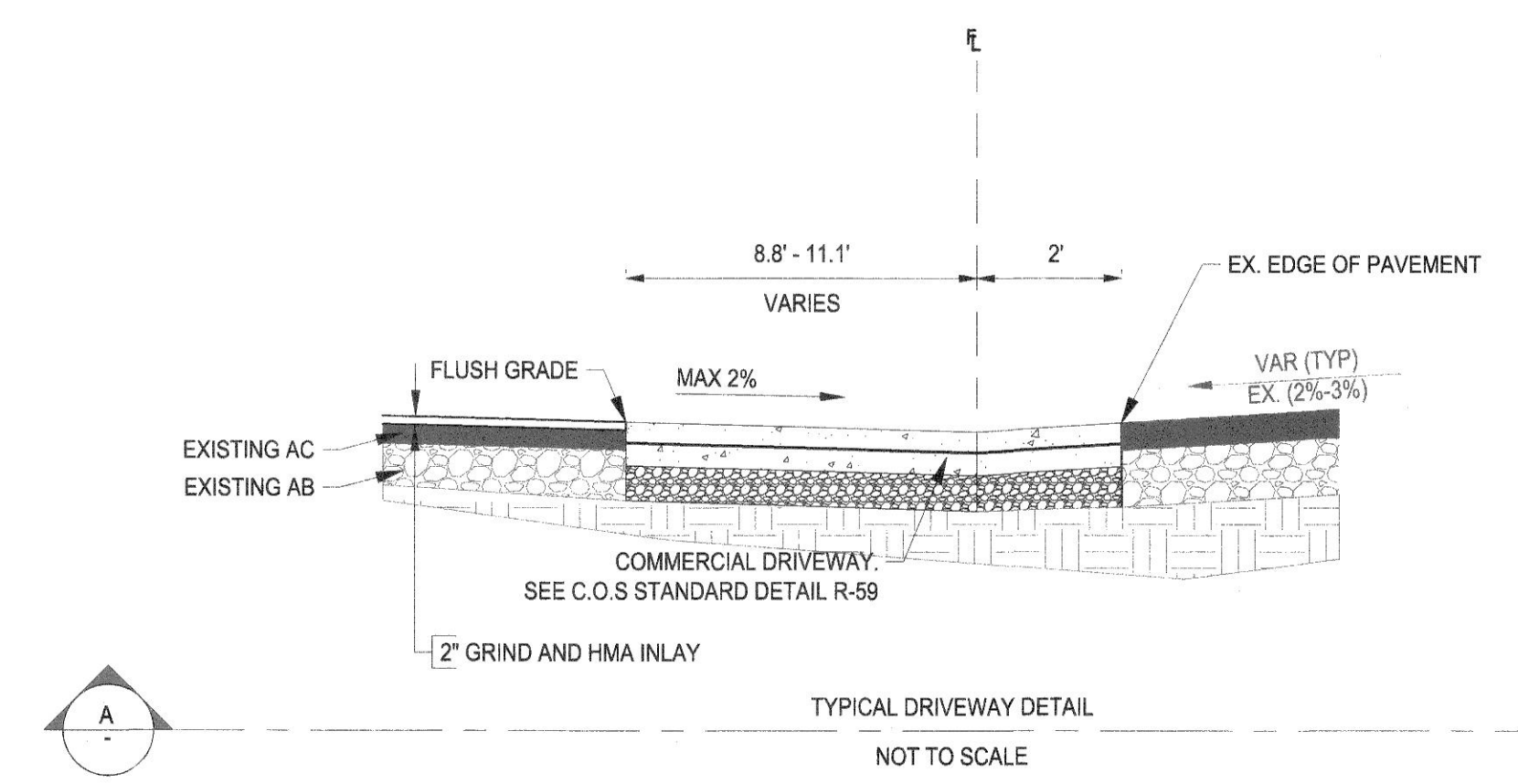


A ALTERNATE BID ACCESSIBLE RAMPS AT ENTRY
SCALE: 1"=5'

D ACCESSIBLE RAMP AT SENIOR CENTER ENTRY
SCALE: 1"=5'



B ALTERNATE BID ACCESSIBLE RAMPS AT ENTRY
SCALE: 1"=5'



C ALTERNATE BID ACCESSIBLE RAMPS AT ENTRY
SCALE: 1"=5'



**OAK PARK SENIOR CENTER
PARKING LOT IMPROVEMENTS
GRADING DETAILS**

SIEGFRIED
3428 Brookside Road
Stockton, CA 95219
Phone: 209-943-2021
Fax: 209-943-0214
www.siegfriedeng.com

- CIVIL ENGINEERING
- STRUCTURAL ENGINEERING
- LANDSCAPE ARCHITECTURE
- LAND SURVEYING
- PLANNING
- ATHLETIC FACILITY DESIGN

Revision No.	Description	Date	By	Appr'd By

SCALE	AS SHOWN	APPROVED BY:	DATE	SHEET NO.
DESIGNED BY	JR			7
DRAWN BY	JR			OF 9 SHEETS
CHECKED BY	AKM			WD22012
RECORD DWGS.				PROJECT NO.

EROSION CONTROL GENERAL NOTES

- PLANS ARE DIAGRAMMATIC AND ARE NOT INTENDED TO SHOW ALL OFFSETS. THE SITE IS DYNAMIC AND CHANGES ON A DAILY BASIS. CHANGES SHOULD BE MADE ACCORDING TO EXISTING CONDITIONS. BECAUSE IT IS IMPOSSIBLE TO PREDICT ALL POSSIBLE SITUATIONS, CONTRACTOR SHALL USE BEST MANAGEMENT PRACTICES TO ENSURE QUALITY CONTROL.
- THE CONTRACTOR SHALL REVIEW THE CURRENT STORM WATER POLLUTION PREVENTION PLAN (SWPPP). IT IS THE CONTRACTOR'S SOLE RESPONSIBILITY FOR CONDUCTING HIS/HER OPERATIONS IN ADHERENCE TO THE SWPPP. THE CONTRACTOR IS RESPONSIBLE FOR ANY FINES, DELAYS, AND/OR DAMAGES RESULTING FROM ANY STATE WATER QUALITY CONTROL BOARD SANCTIONS CAUSED BY THE OPERATION OF THE CONTRACTOR OR HIS/HER SUBCONTRACTORS.
- THE FOLLOWING PLANS ARE ACCURATE FOR EROSION CONTROL PURPOSES ONLY. THE CONTRACTOR SHALL FOLLOW THESE PLANS UNLESS FIELD CONDITIONS DICTATE MODIFICATION. IF MODIFICATION IS NECESSARY, A SWPPP AMENDMENT MUST BE DONE. THIS MAY REQUIRE MODIFICATION TO THESE DRAWINGS AND ENGINEER CONCURRENCE.
- INSPECT AND REPAIR FILTERS AFTER EACH STORM EVENT. REMOVE SEDIMENT WHEN 1/2 OF THE FILTER DEPTH HAS BEEN FILLED. REMOVED SEDIMENT SHALL BE DEPOSITED IN AN AREA TRIBUTARY TO A SEDIMENT BASIN OR OTHER FILTERING MEASURE. SEDIMENT AND GRAVEL SHALL BE IMMEDIATELY REMOVED FROM PAVEMENT OF ROADS.
- UNFINISHED AND DISTURBED ARE TO BE PROTECTED WITH AN APPLICATION OF BLOWN STRAW AND ORGANIC BINDER.

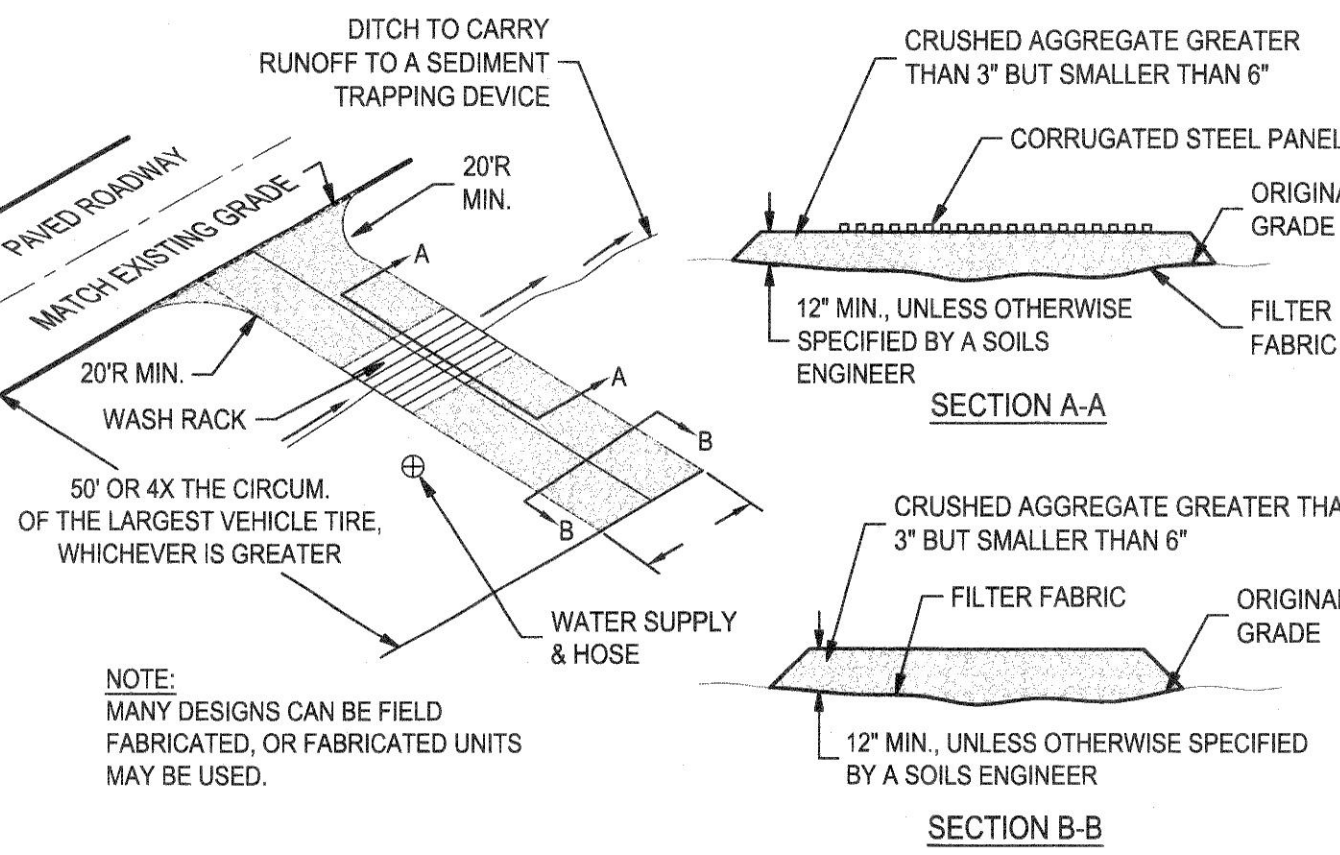
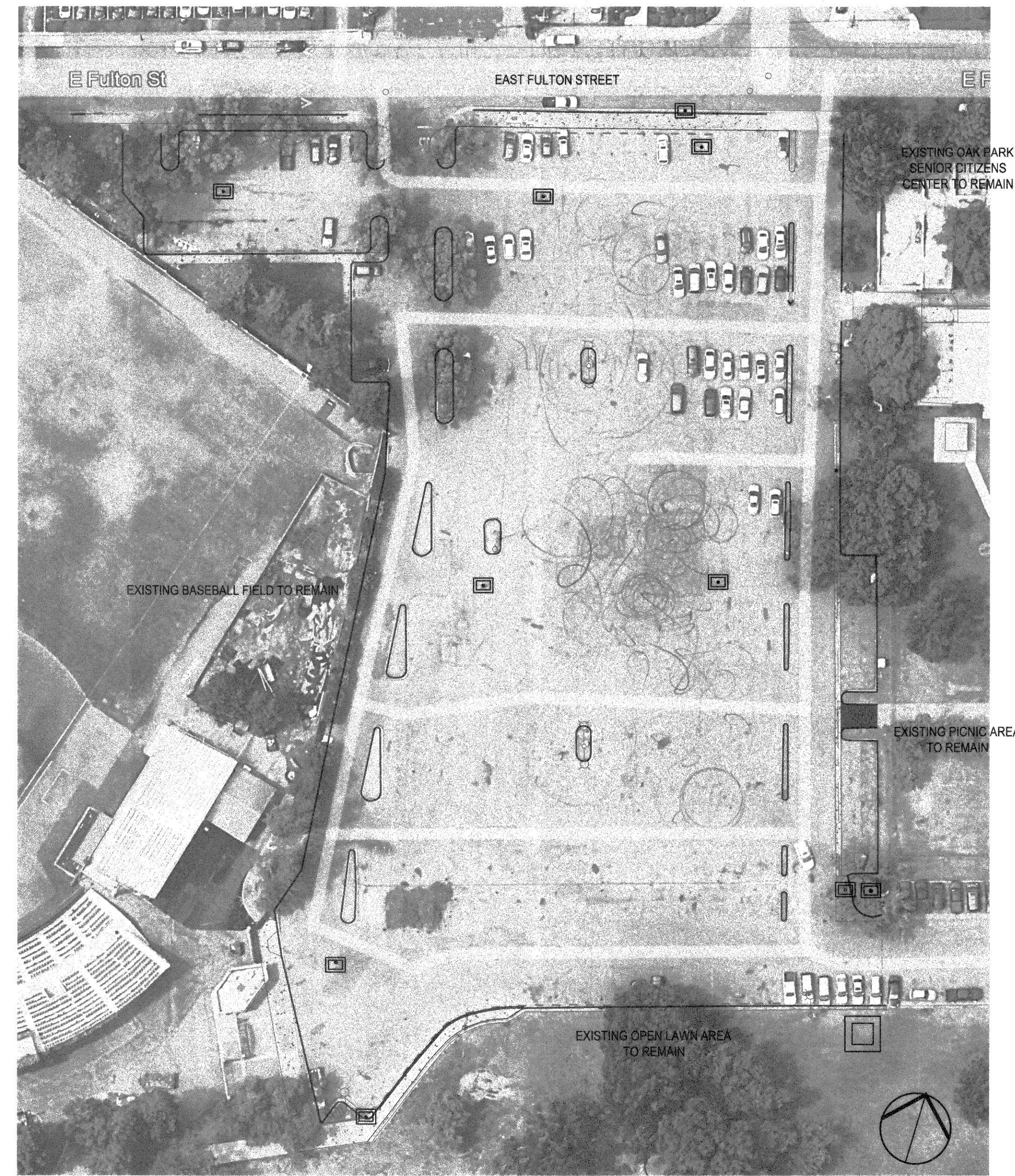
ITEM	LB/ACRE
STRAW	4,000
ORGANIC BINDER	200
- ALTERNATE INLET PROTECTION SHALL BE USED ON ROADS OPEN TO THE PUBLIC IF ANY HAZARDOUS MATERIALS OR WASTES WHICH HAVE BEEN TREATED, STORED, DISPOSED, SPILLED, OR LEAKED IN SIGNIFICANT QUANTITIES ONTO THE CONSTRUCTION SITE. THE CONTRACTOR SHALL BE RESPONSIBLE TO REMOVE THEM FROM THE SITE AND DISPOSE OF PROPERLY.
- CHLORINATED OR DECHLORINATED WATER SHALL NOT BE DISCHARGED INTO THE STORM DRAIN SYSTEM. THE CONTRACTOR MAY DISPOSE THIS WATER INTO THE SANITARY SEWER SYSTEM UPON APPROVAL BY THE GOVERNING AGENCY.
- THE CONTRACTOR SHALL KEEP MAINTENANCE, INSPECTION, AND REPAIR PROCEDURES TO ENSURE THAT ALL GRADED SURFACES, WALLS, BERMS, DRAINAGE STRUCTURES, VEGETATION, EROSION AND SEDIMENT CONTROL MEASURES, AND OTHER CONTROLS ARE MAINTAINED IN GOOD AND EFFECTIVE CONDITION AND ARE PROMPTLY REPAIRED OR RESTORED WHEN NECESSARY. ANY DEWATERING WATER SHALL NOT BE DISCHARGED DIRECTLY INTO THE STORM WATER SYSTEM, AND SHALL NOT BE DISCHARGED INTO THE SEWER SYSTEM.
- ALL DEWATERING WATER MUST BE CHANNELLED THROUGH AN APPROVED SEDIMENT BARRIER PRIOR TO THE WATER ENTERING THE STORM SYSTEM.

- PAVEMENT CLEANING- FLUSHING OF STREETS/PARKING LOTS TO REMOVE DIRT AND CONSTRUCTION DEBRIS IS PROHIBITED UNLESS PROPER SEDIMENT CONTROLS ARE USED. PREFERABLY, AREAS REQUIRING CLEANING SHOULD BE SWEEPED.
- ALL STOCKPILES OF MATERIALS THAT ARE NOT GOING TO BE USED FOR 14 DAYS SHALL BE COVERED.
- CONTRACTOR TO USE BEST MANAGEMENT PRACTICES (BMPs) THROUGHOUT CONSTRUCTION. USE ALL BMPs THAT APPLY TO THE PROJECT, INCLUDING BUT NOT LIMITED TO THE FOLLOWING BMPs:
 - DRAIN INLET PROTECTION - CALIFORNIA STORMWATER BMP HANDBOOK SECTION SE-10
 - SOLID WASTE MANAGEMENT - CALIFORNIA STORMWATER BMP HANDBOOK SECTION WM-5
 - MATERIAL STORAGE - CALIFORNIA STORMWATER BMP HANDBOOK SECTION WM-1
 - PAVING - CALIFORNIA STORMWATER BMP HANDBOOK SECTION NS-3
 - DUST CONTROL, SEDIMENT CONTROL, EROSION CONTROL AND CONCRETE WASHOUT AREAS - SHOWN ON THIS SHEET WITH DETAILS
- CONTRACTOR SHALL INSTALL DRAIN INLET PROTECTION FOR ALL CATCH BASINS LOCATED IN THE VICINITY OF WORK. THIS INCLUDES ANY CATCH BASINS LOCATED IN THE PUBLIC RIGHT-OF-WAY, AS WELL AS ANY ON-SITE CATCH BASINS LOCATED IN THE PARKING LOT.
- CONTRACTOR SHALL ENSURE THAT CONSTRUCTION ACTIVITIES DO NOT DEPOSIT SEDIMENT ONTO THE PARKING LOT OR PUBLIC ROADWAY, SIDEWALK, AND GUTTERS.
- CONTRACTOR SHALL USE STREET SWEEPING OR OTHER DRY-SWEEPING METHOD, AS NECESSARY, TO REMOVE CONSTRUCTION-RELATED SEDIMENTS FROM PAVEMENT IN PROJECT AREA PARKING LOT AND PUBLIC SIDEWALKS, GUTTERS, AND ROADWAY.
- CONTRACTOR SHALL SCHEDULE WORK FOR DRY-WEATHER DAYS WHEN NO RAIN IS IN THE IMMEDIATE FORECAST.

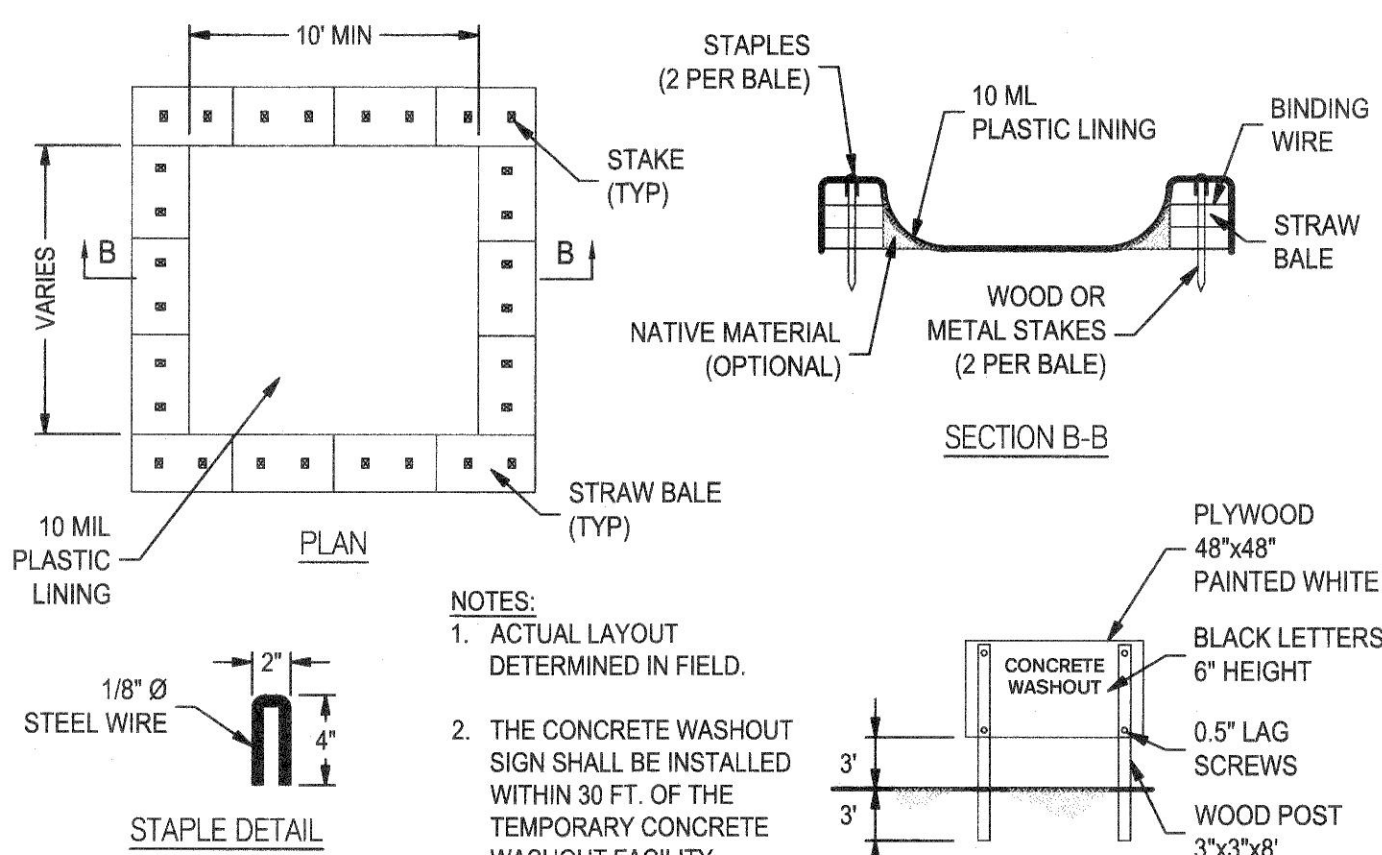
NOTE: THESE BMPs ARE DIAGRAMMATIC ONLY. ACTUAL INSTALLATION LOCATIONS WILL BE DETERMINED ONSITE BY PROJECT QUALIFIED STORMWATER POLLUTION PREVENTION PLAN PRACTITIONER (QSP). ALTERNATIVE BMPs THAT DO NOT ADHERE TO THESE DETAILS BUT COMPLY WITH CASQA AND THE INTENT OF THIS PLAN MAY BE SUPPLIED AND USED ON CONSTRUCTION SITE UNDER SUPERVISION OF PROJECT QSP.

EROSION CONTROL LEGEND

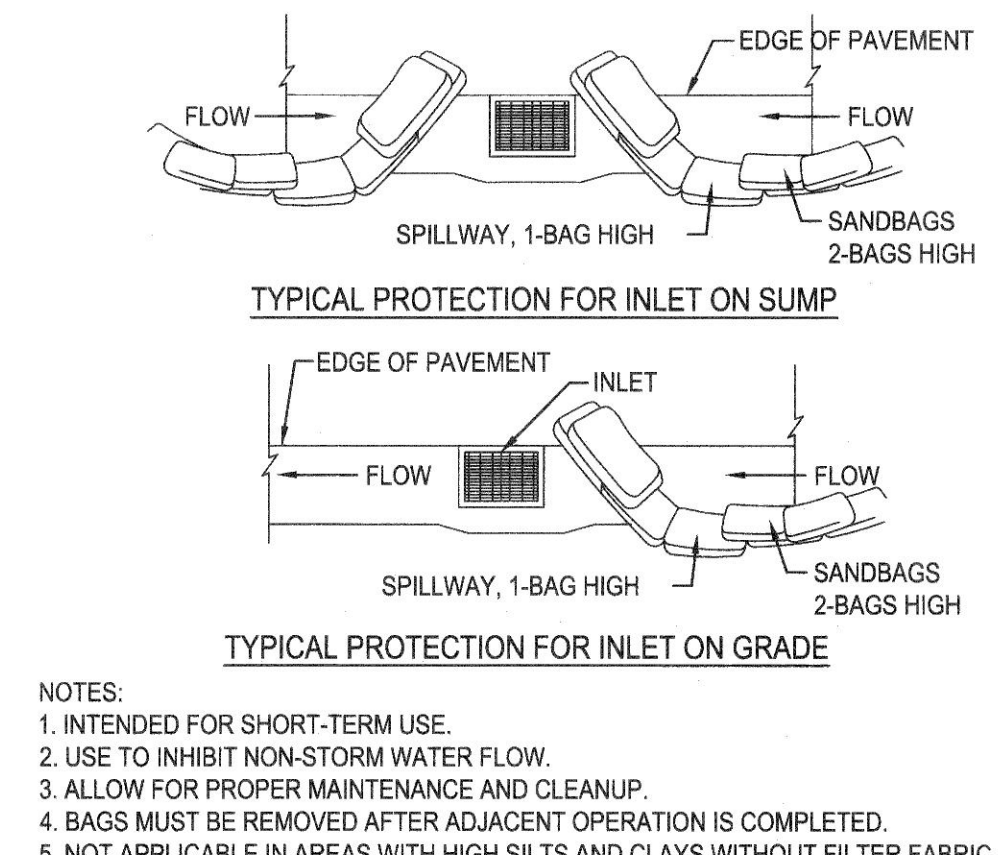
SYMBOL	DESCRIPTION
	GRAVEL BAG FILTER AT DROP INLET, SEE DETAIL 3 THIS SHEET
	CONCRETE WASHOUT, CONTRACTOR TO DETERMINE LOCATION, SEE DETAIL 2 THIS SHEET



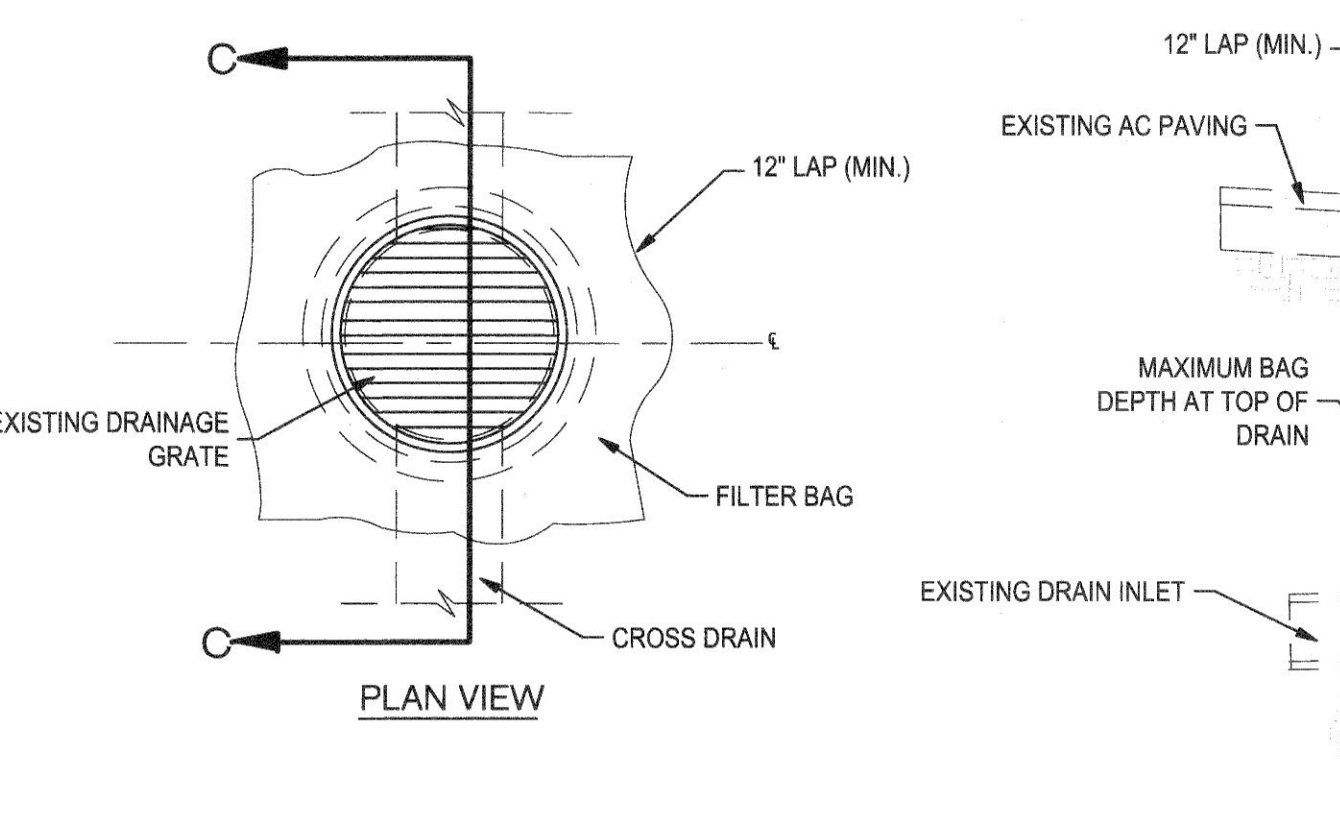
1 STABILIZED CONSTRUCTION ENTRANCE/OUTLET TIRE WASH
NO SCALE



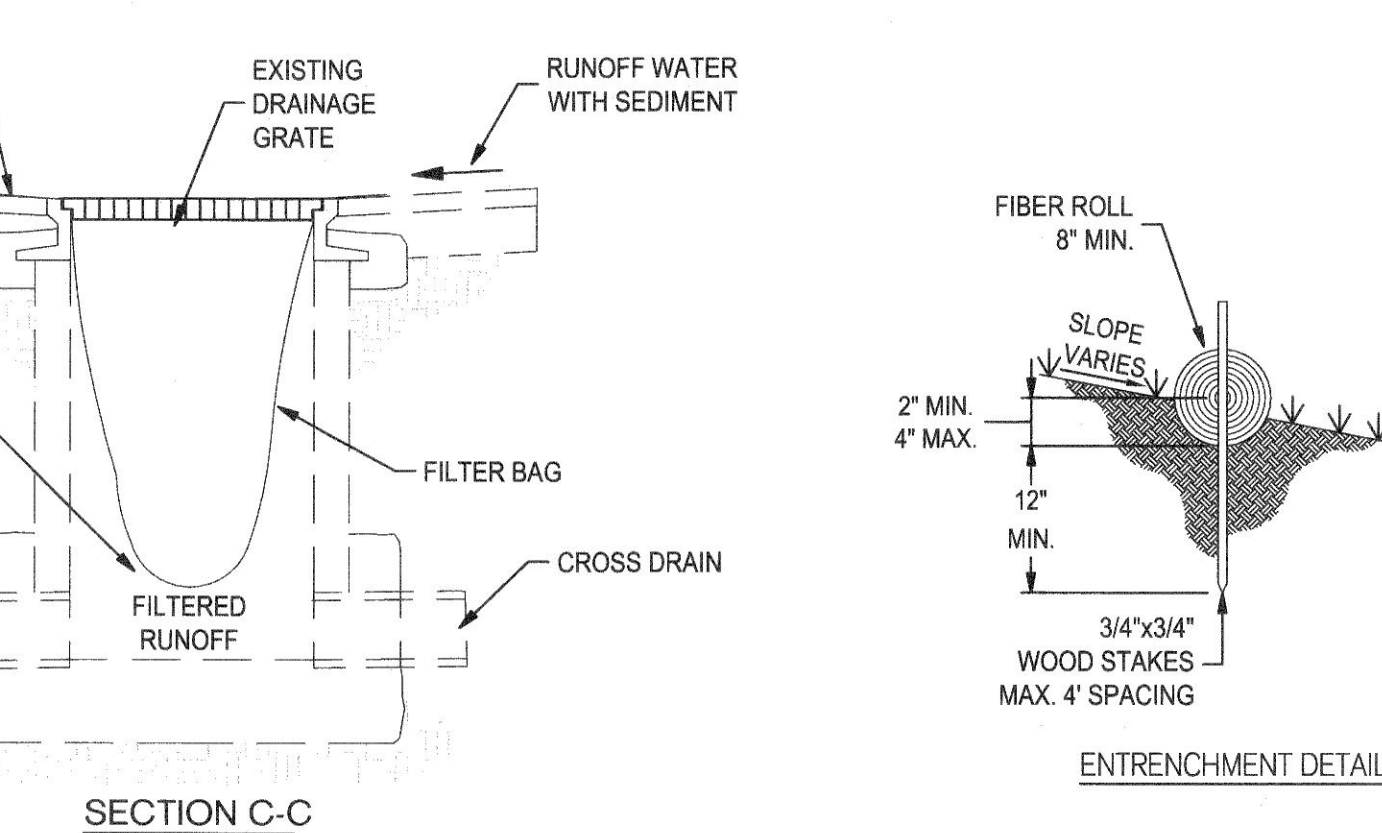
2 CONCRETE WASHOUT
NO SCALE



3 DI PROTECTION - TYPE 3 SE-10
NO SCALE



4 TEMPORARY GRAVEL BAG FILTER AT DROP INLET
NO SCALE

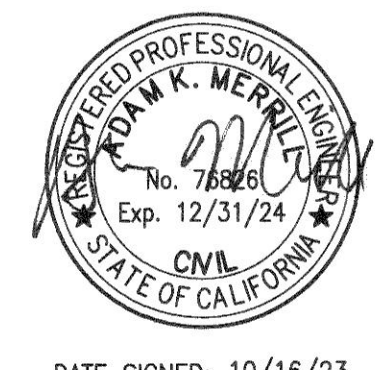


5 FIBER ROLLS
NO SCALE

SLOPE %	ROLL SPACING
0-25	50 FT
25-50	15 FT
50% OF GREATER	10 FT

EROSION CONTROL PLAN

SCALE: 1" = 50'



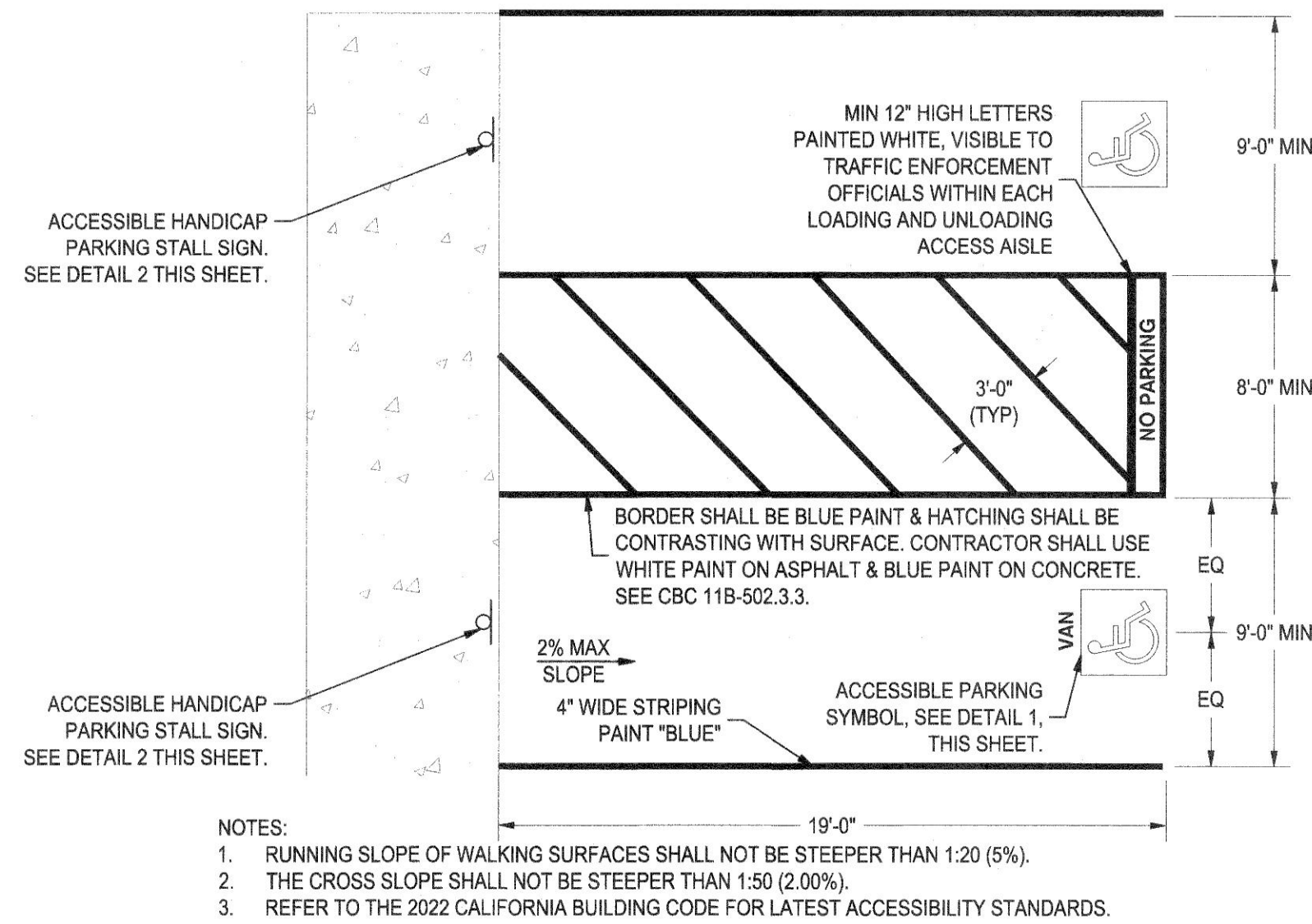
DATE SIGNED: 10/16/23

**OAK PARK SENIOR CENTER
PARKING LOT IMPROVEMENTS**
EROSION CONTROL PLAN

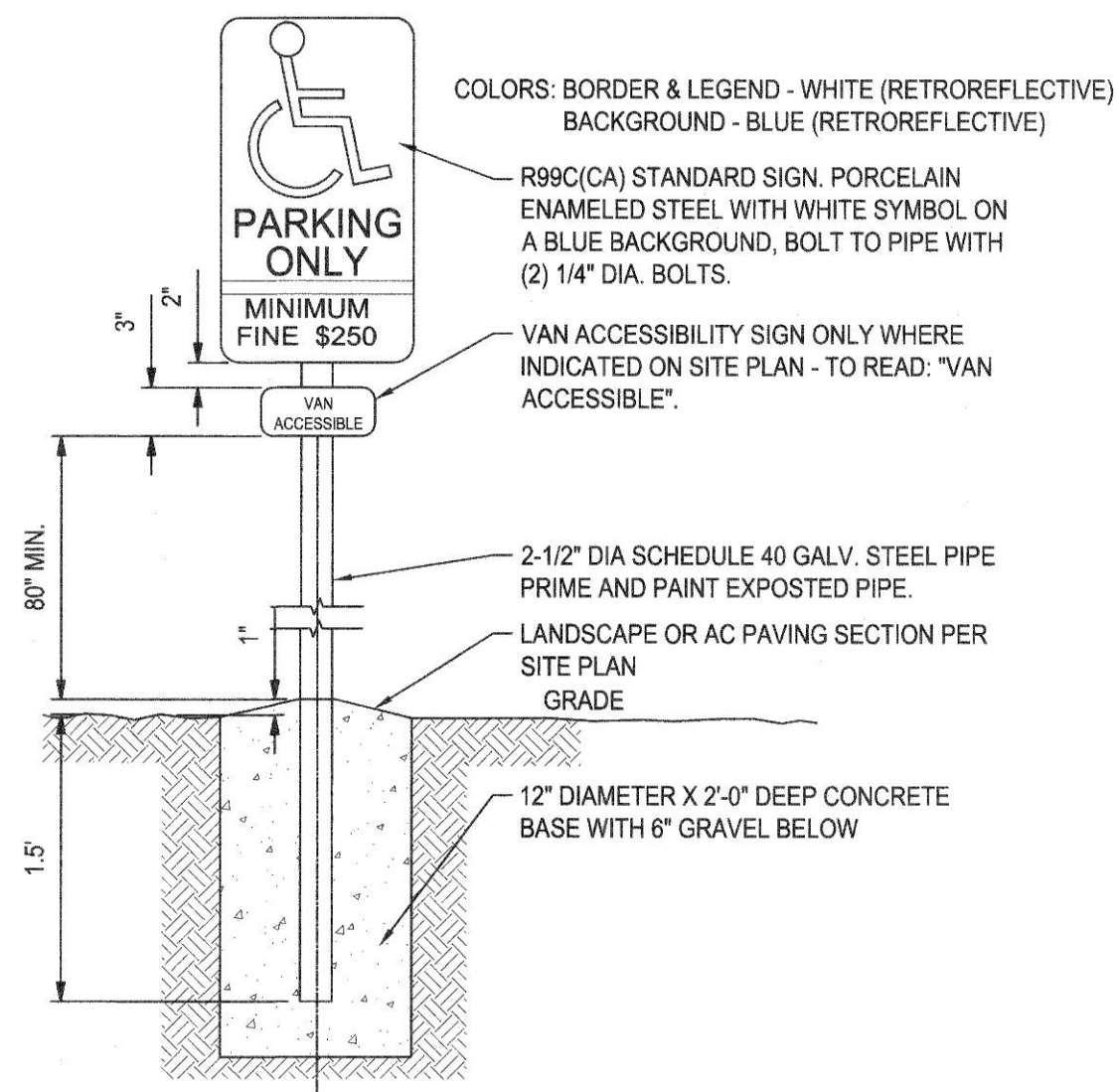
DEPARTMENT OF PUBLIC WORKS CITY OF STOCKTON, CALIFORNIA		SCALE: AS SHOWN	APPROVED BY: <i>[Signature]</i>	SHEET NO. 8
DESIGNED BY: JR	DATE: 10/16/23	DRAWN BY: JR	CITY ENGINEER	OF 9 SHEETS
CHECKED BY: AKM	PROJECT NO. WD22012	RECORD DWGS.	STOCKTON, CALIFORNIA	PROJECT NO.

SIEGFRIED
3426 Brookside Road
Stockton, CA 95219
Phone: 209-943-2021
Fax: 209-942-0214
www.siegfried.com

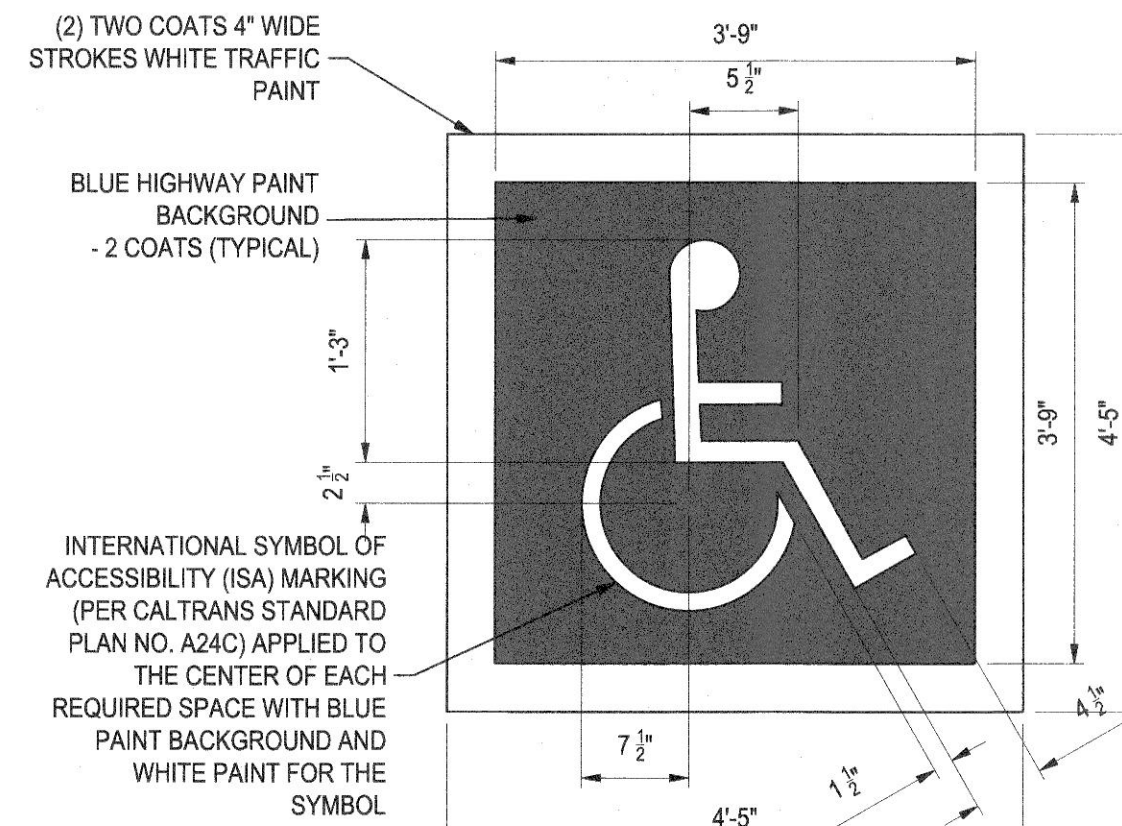
- CIVIL ENGINEERING
- STRUCTURAL ENGINEERING
- LANDSCAPE ARCHITECTURE
- LAND SURVEYING
- PLANNING
- ATHLETIC FACILITY DESIGN



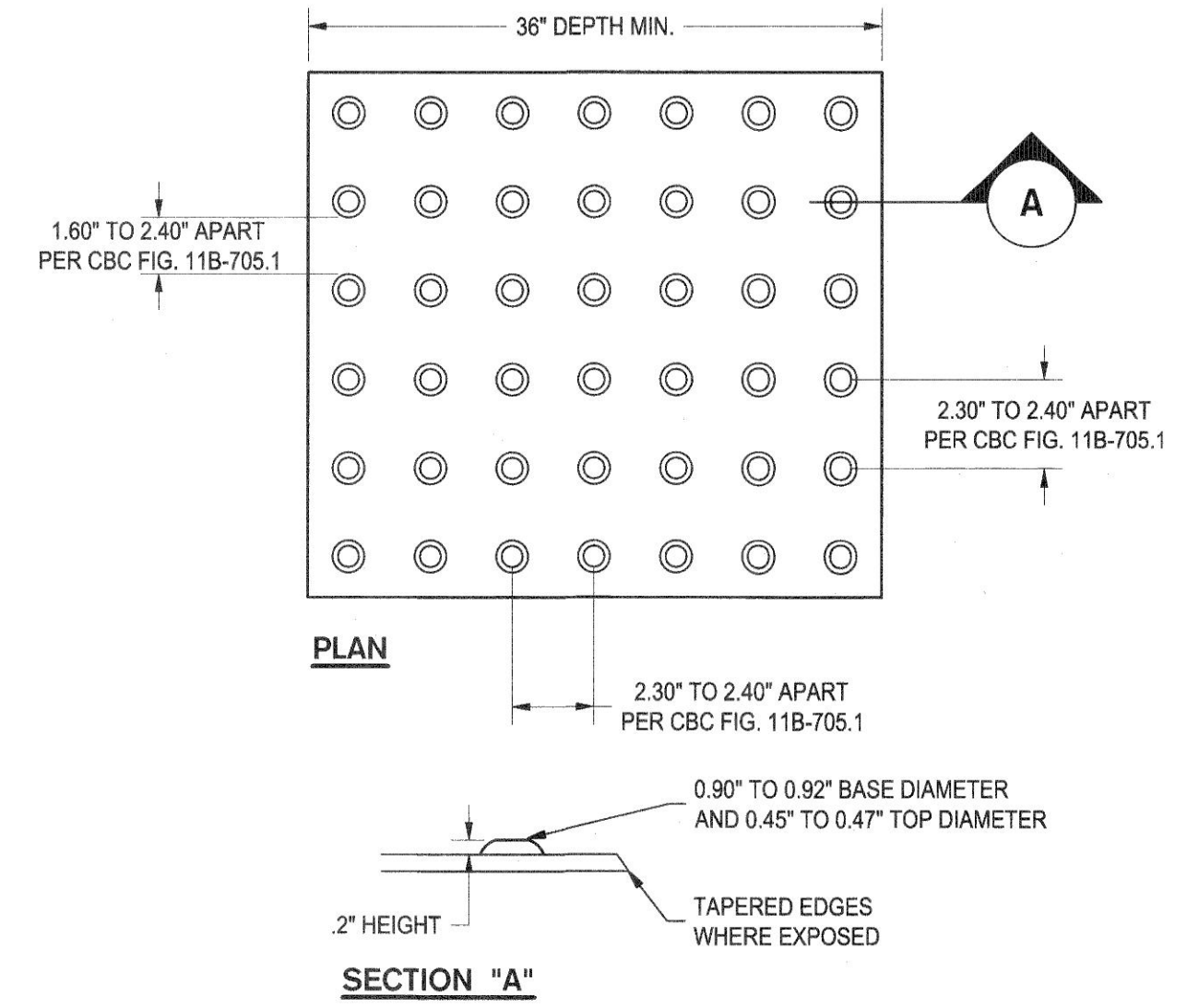
1 ACCESSIBLE PARKING STALL DETAIL
NOT TO SCALE



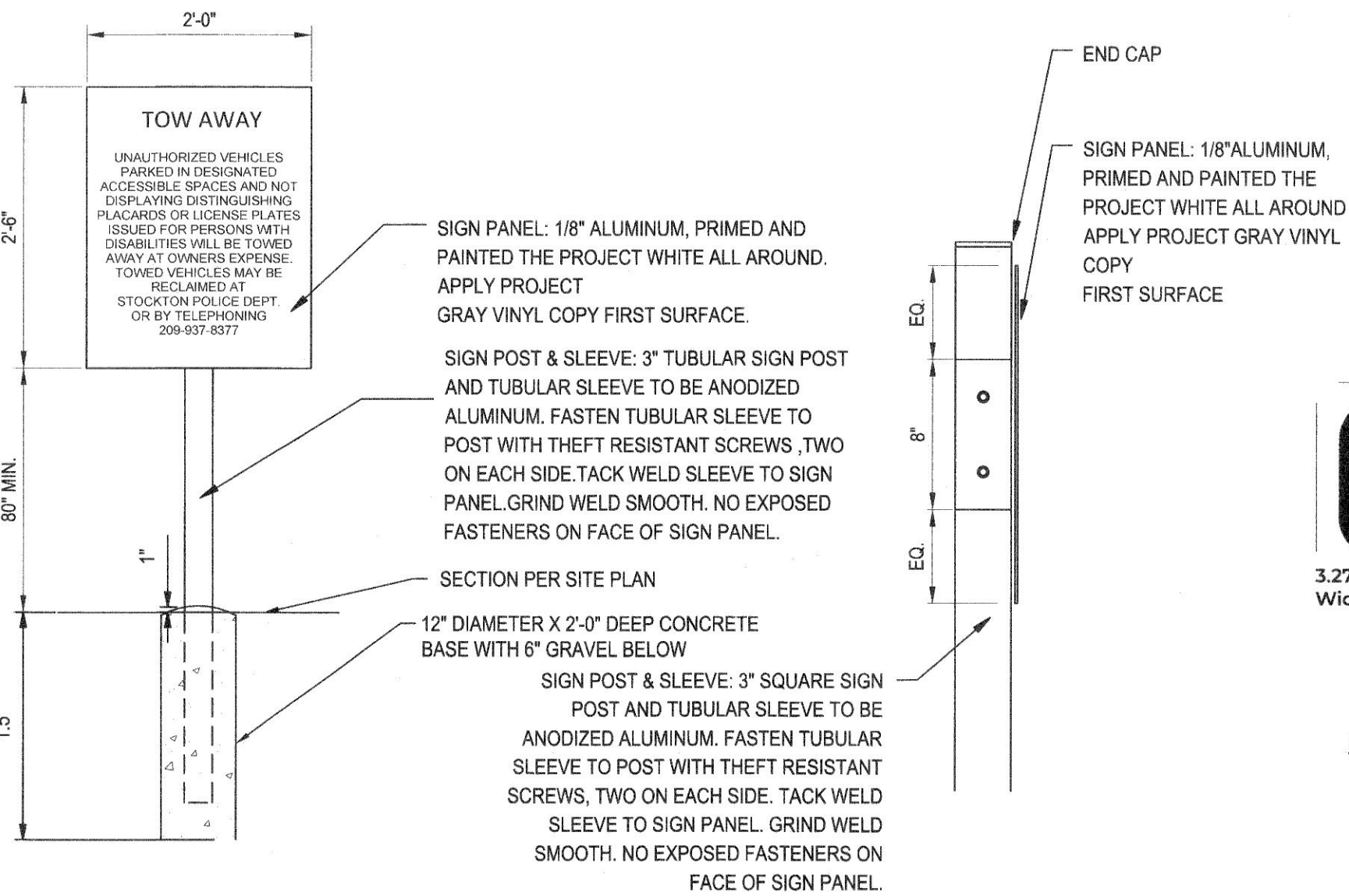
2 ACCESSIBLE PARKING SIGNAGE
NOT TO SCALE



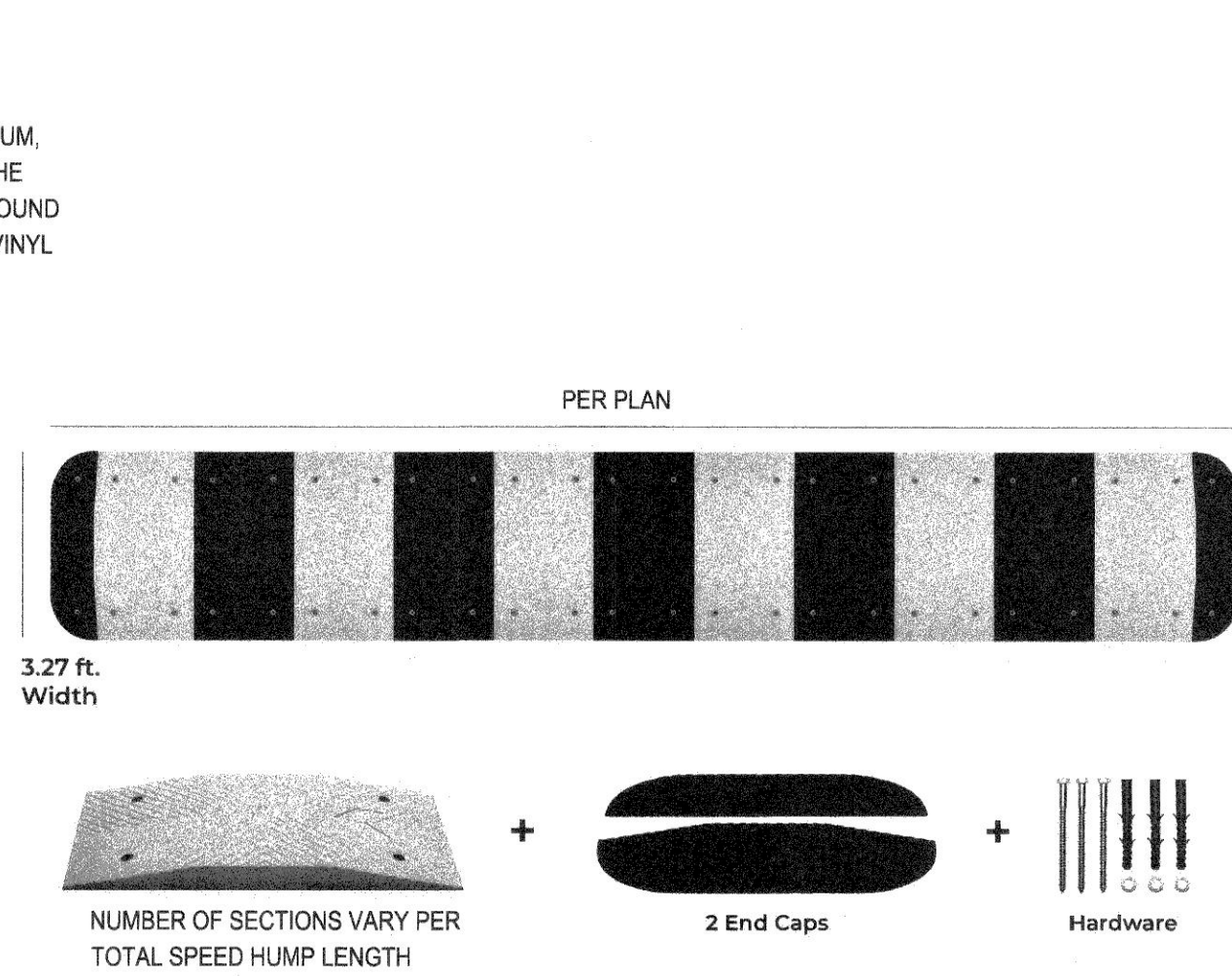
3 ACCESSIBLE PARKING SYMBOL
NOT TO SCALE



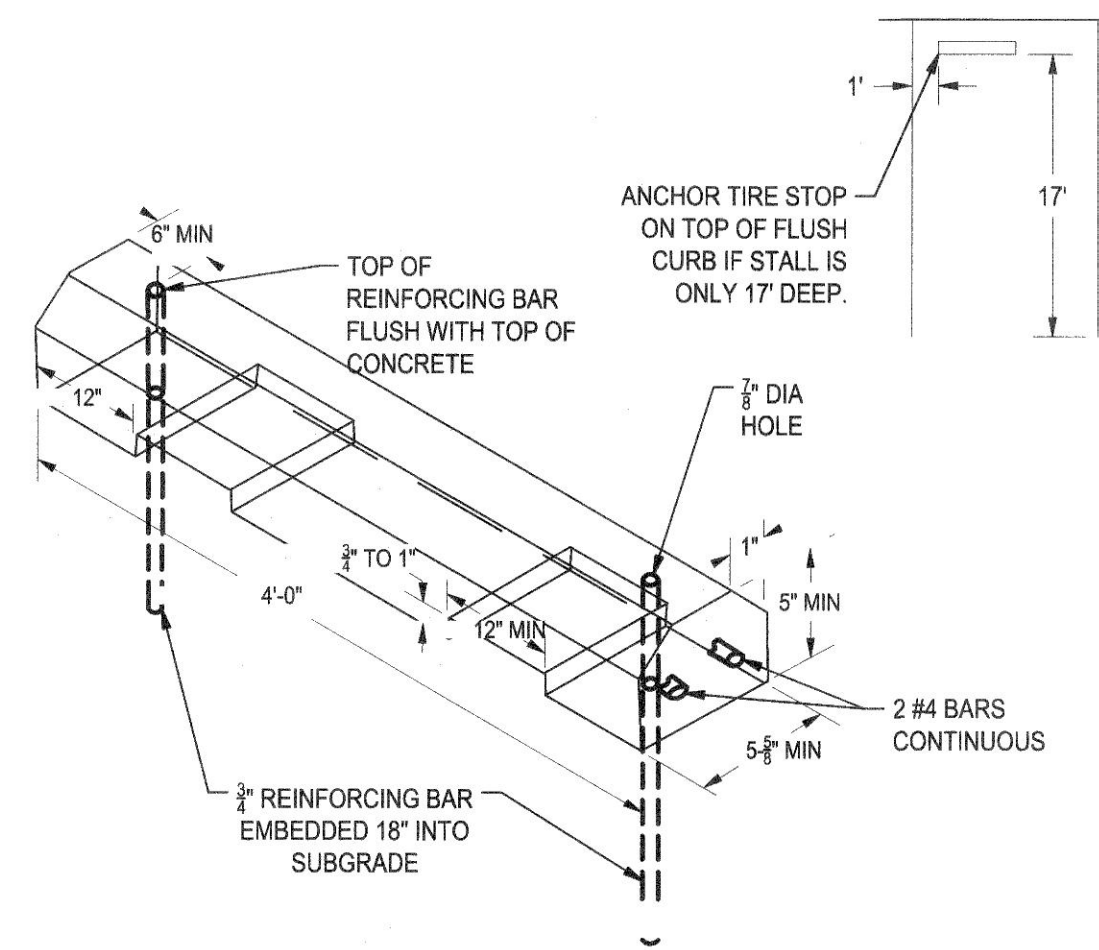
4 TRUNCATED DOMES
NOT TO SCALE



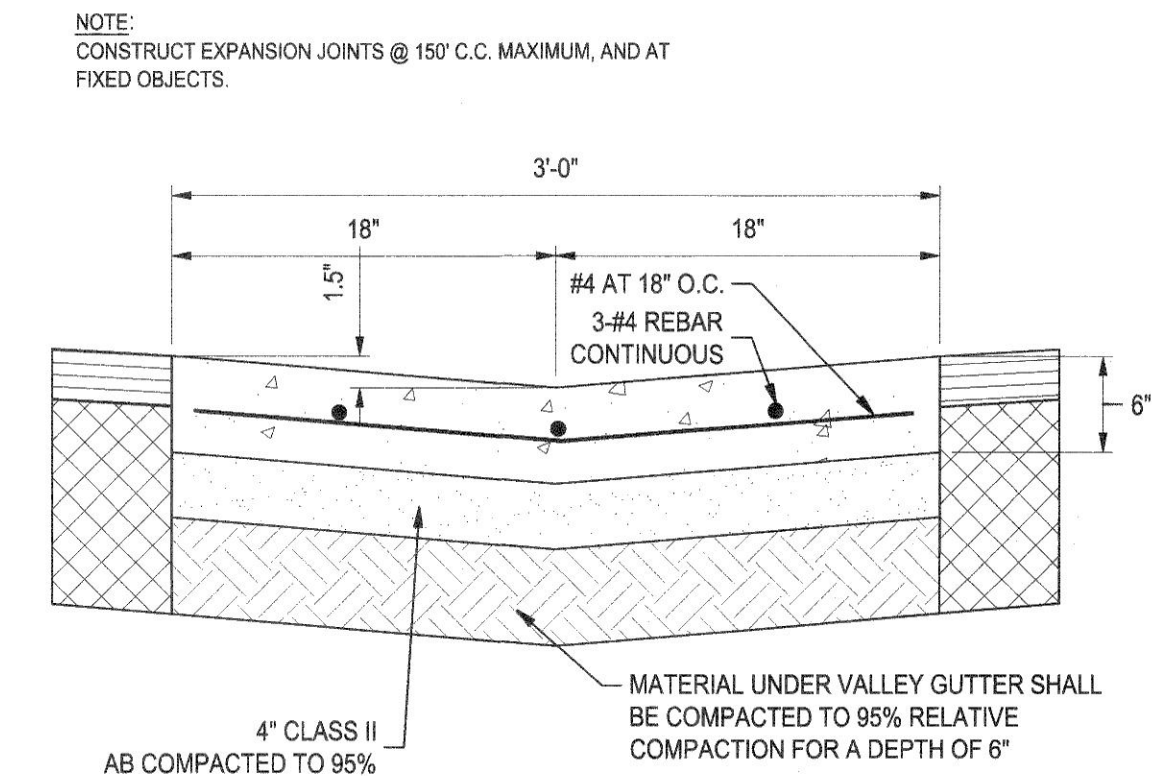
5 TOW AWAY SIGN & ATTACHMENT DETAIL
NOT TO SCALE



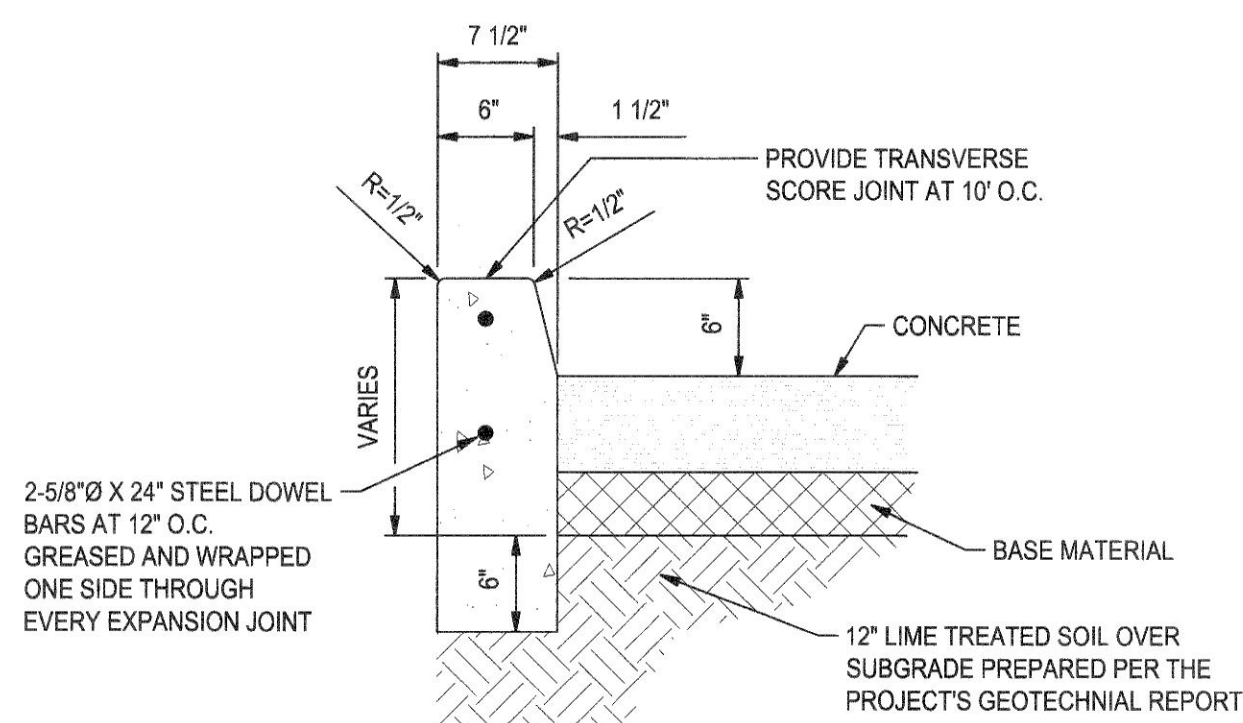
6 TYPICAL RUBBER SPEED HUMP DETAIL, OR SIMILAR
NOT TO SCALE



7 4' WHEEL STOP
NOT TO SCALE



8 3' CONCRETE VALLEY GUTTER
NOT TO SCALE



9 6" VERTICAL CONCRETE CURB
NOT TO SCALE

SIEGFRIED

3426 Brookside Road
Stockton, CA 95219
Phone: 209-943-2021
Fax: 209-943-0214
www.siegfriedeng.com

- CIVIL ENGINEERING
- STRUCTURAL ENGINEERING
- LANDSCAPE ARCHITECTURE
- LAND SURVEYING
- PLANNING
- ATHLETIC FACILITY DESIGN

Revision No.	Description	Date	By	Appr'd By



DATE SIGNED: 10/16/23

OAK PARK SENIOR CENTER
PARKING LOT IMPROVEMENTS

CONSTRUCTION DETAILS

DEPARTMENT OF PUBLIC WORKS
CITY OF STOCKTON, CALIFORNIA

SCALE AS SHOWN

DESIGNED BY JR

DRAWN BY JR

CHECKED BY AKM

RECORD DWGS.

APPROVED BY: *[Signature]*

DATE: *[Signature]*

CITY ENGINEER
STOCKTON, CALIFORNIA

SHEET NO. 9

OF 9 SHEETS

WD22012

PROJECT NO.